

GARDEN RIDGE

1,100 sqft 40 units



Garden Ridge

ADULT LIFESTYLE COMMUNITY



Front View



Elegant Roof Lines



Upscale Stone & Brick Exterior



Luxurious 10' Main & 9' Basement Floors



Gourmet Kitchens & Custom Finishes



Back Yard



45° View

- 2 Bedrooms
- Private Garage
- Custom Kitchens
- 1.5 Bathrooms
- Granite Counters
- Walk-in Closets

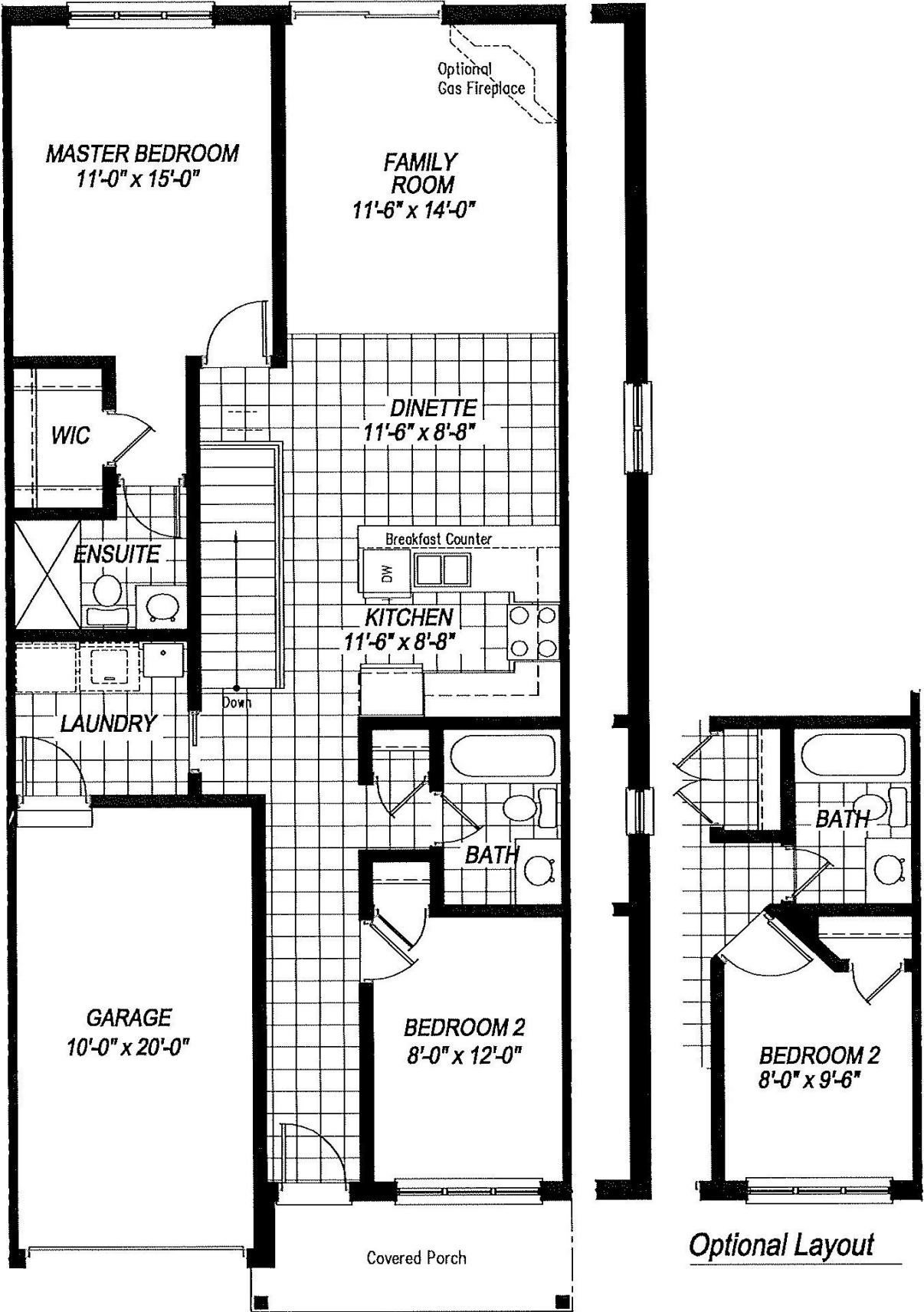
226.242.5600

sclifestylehomes.com
sales@scih.ca



Sally Creek
LIFESTYLE HOMES

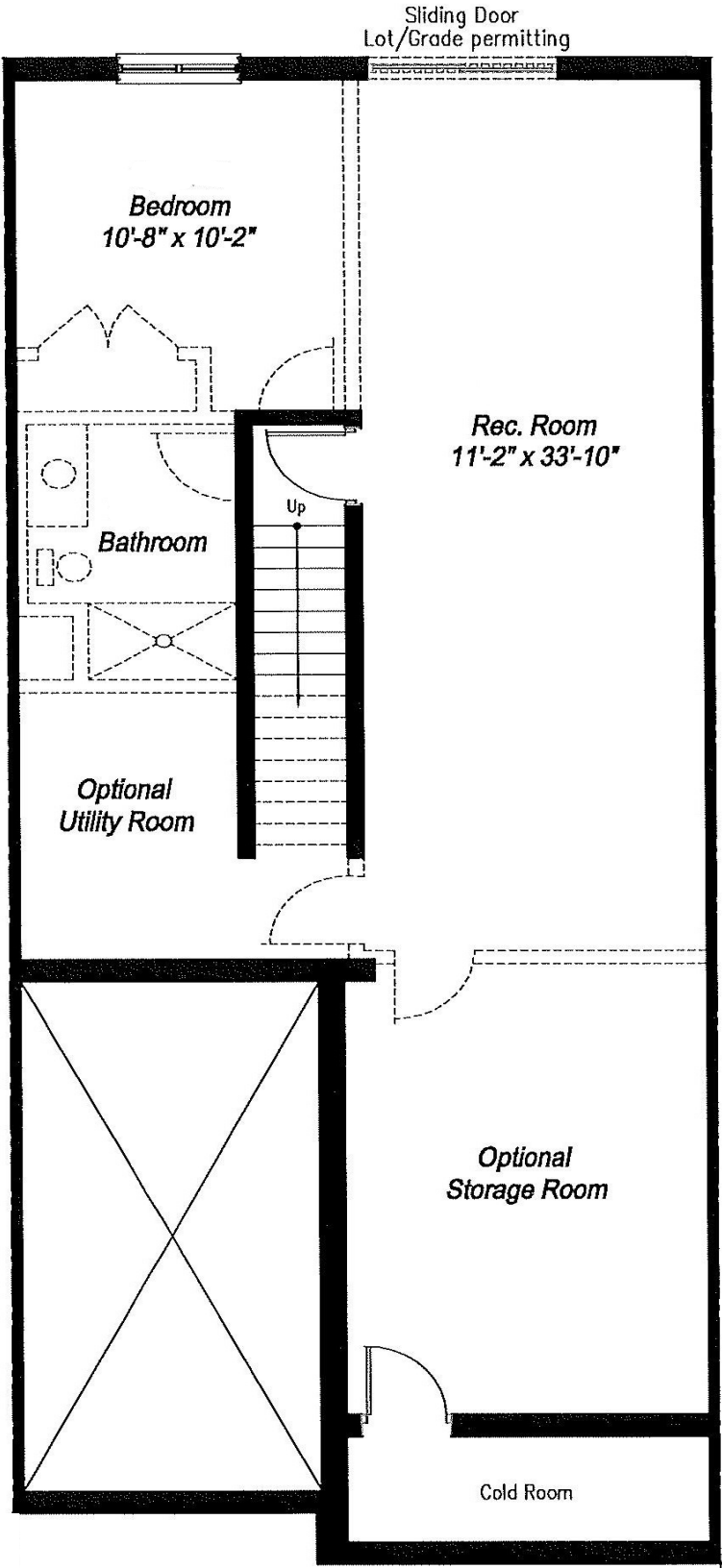
All house renderings and interior drawings are artist conception. Material specifications and floor plans are subject to change without notice. All floor plans are approximate dimensions, E.&O.E.. NOTE: Actual usable floor space may vary from the stated floor area.



Main Floor Plan
10'-0" Main Floor Ceiling Height

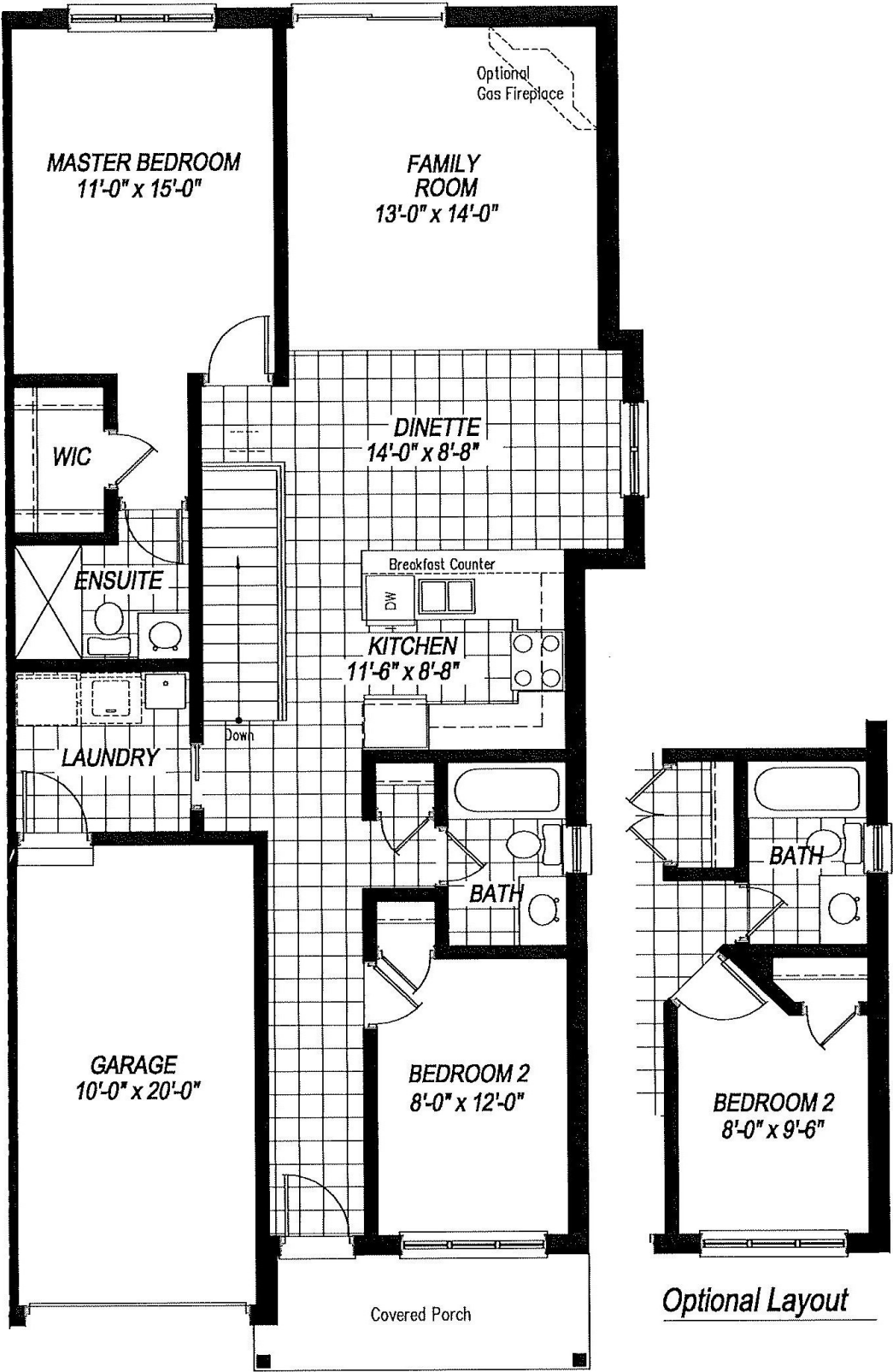
Typical Unit

1100 sq.ft.



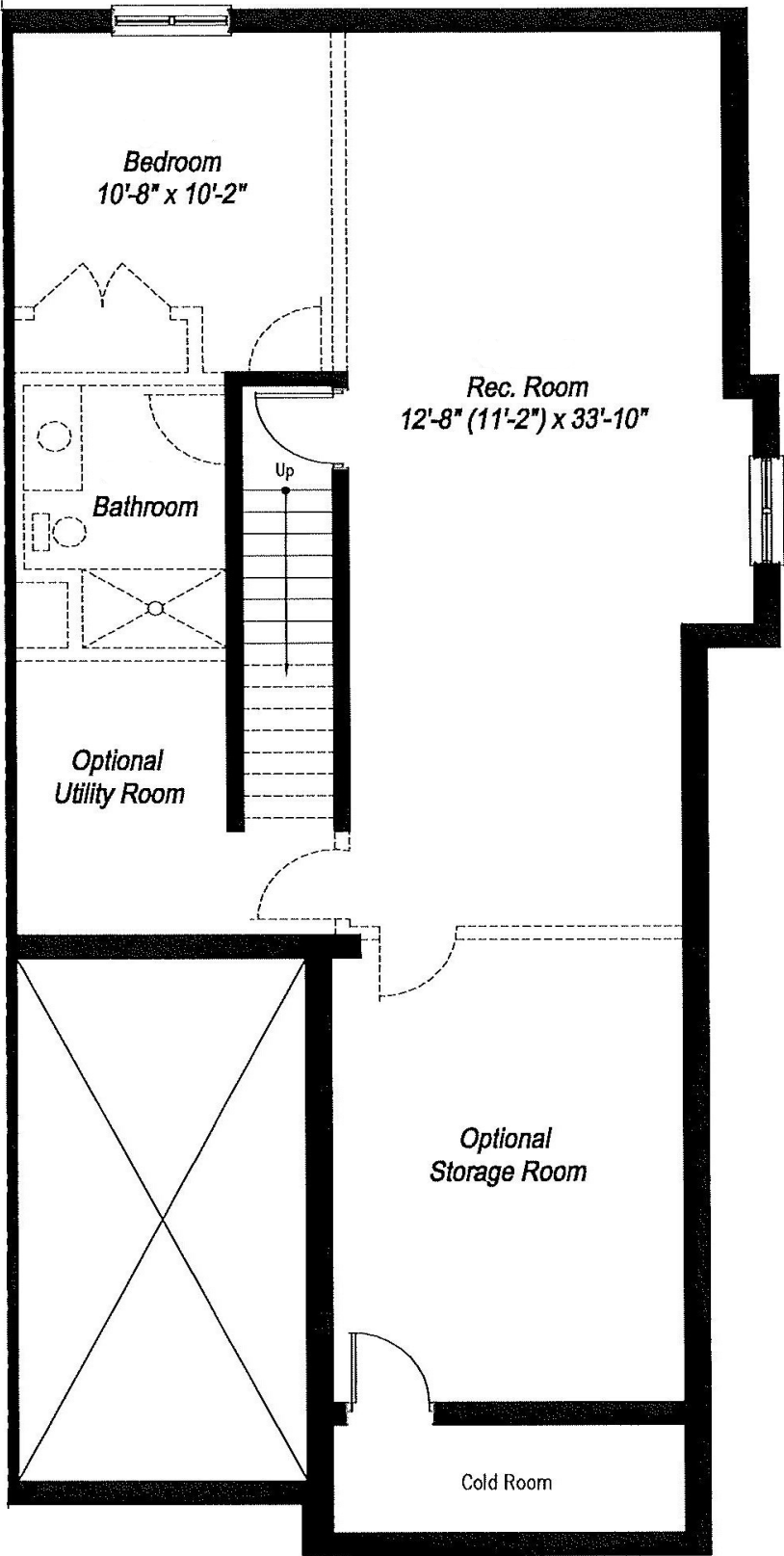
Basement Plan

9'-0" Basement Ceiling Height

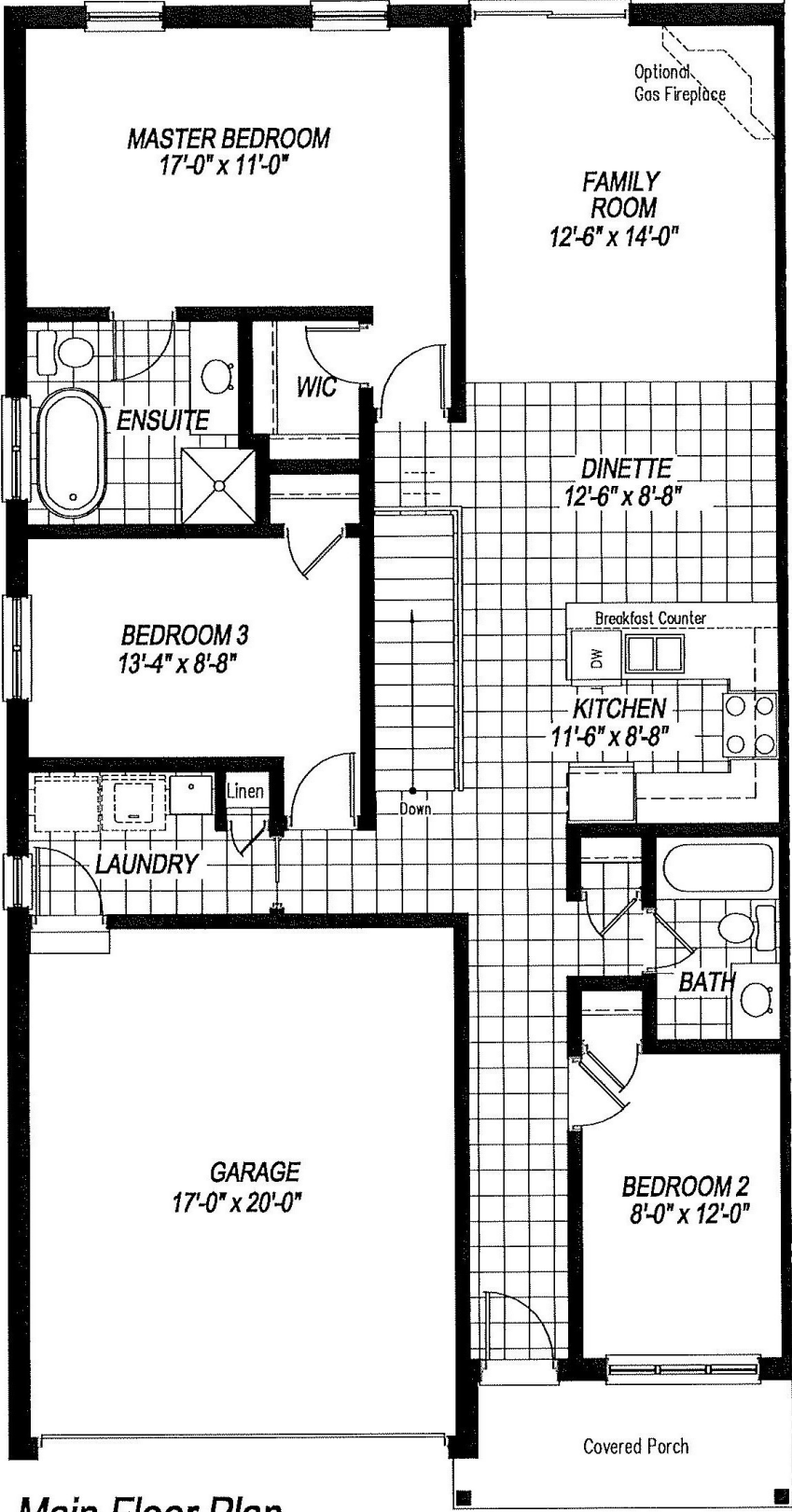


Main Floor Plan
10'-0" Main Floor Ceiling Height

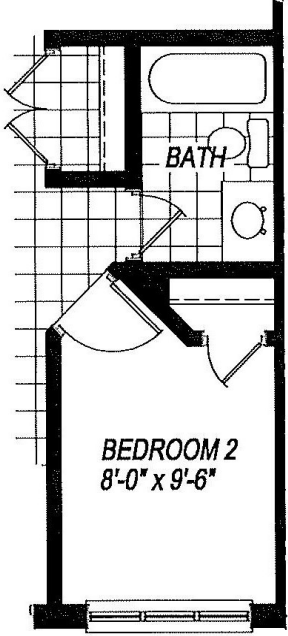
Unit 1 1148 sq.ft.



Basement Plan
9'-0" Basement Ceiling Height



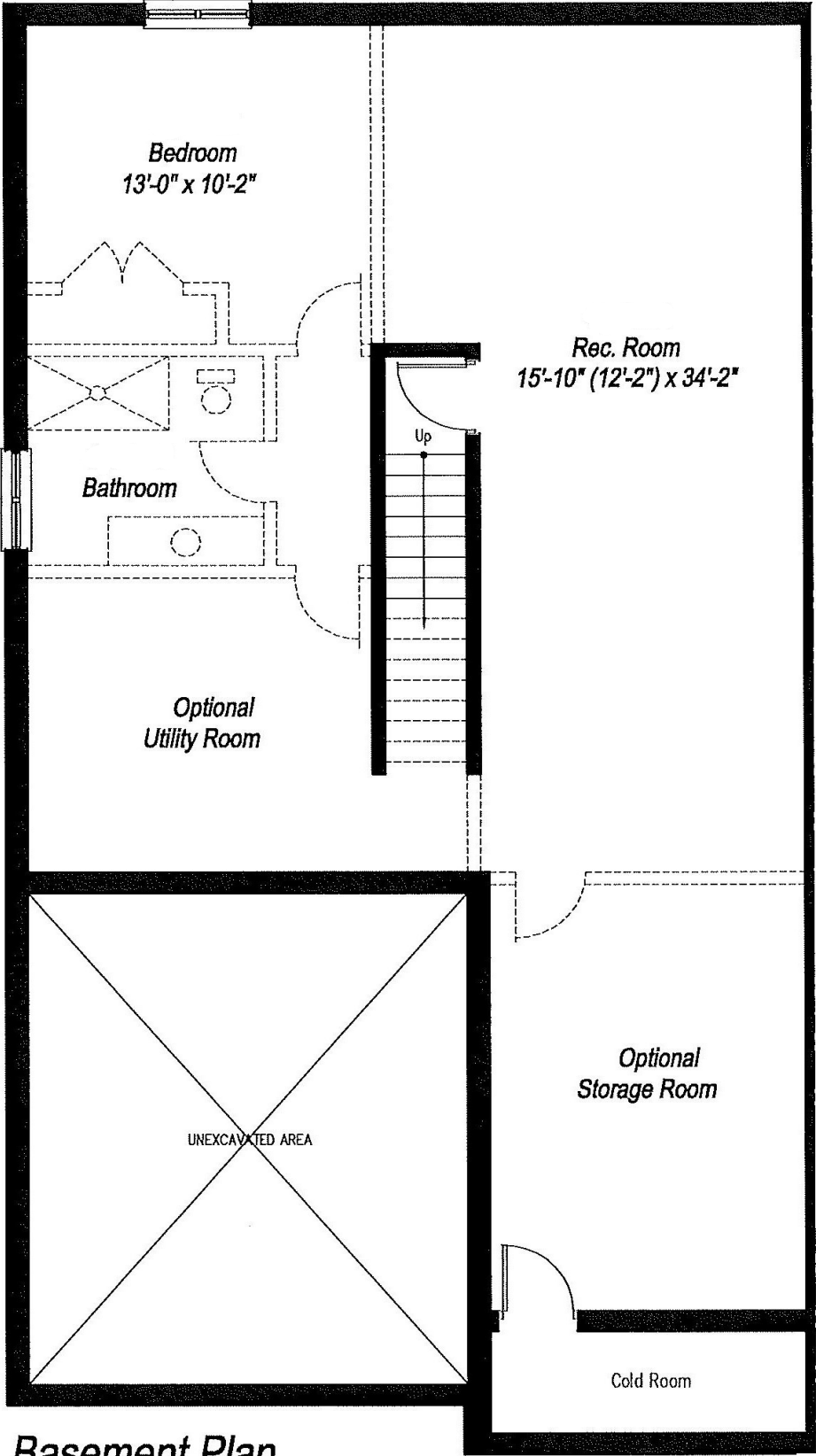
Main Floor Plan
10'-0" Main Floor Ceiling Height



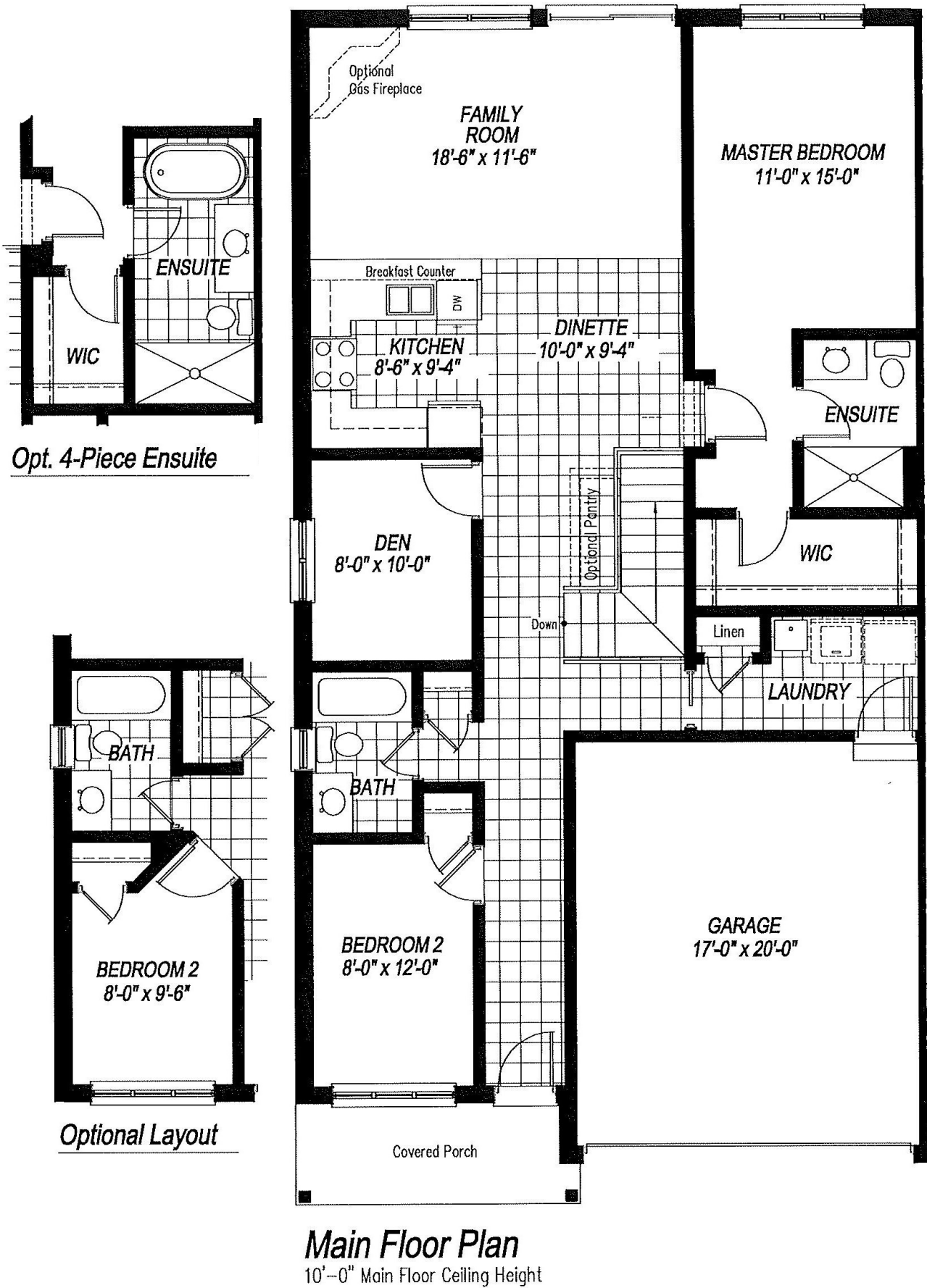
Optional Layout

Unit 4, 34, 37 and 40

1365 sq.ft.

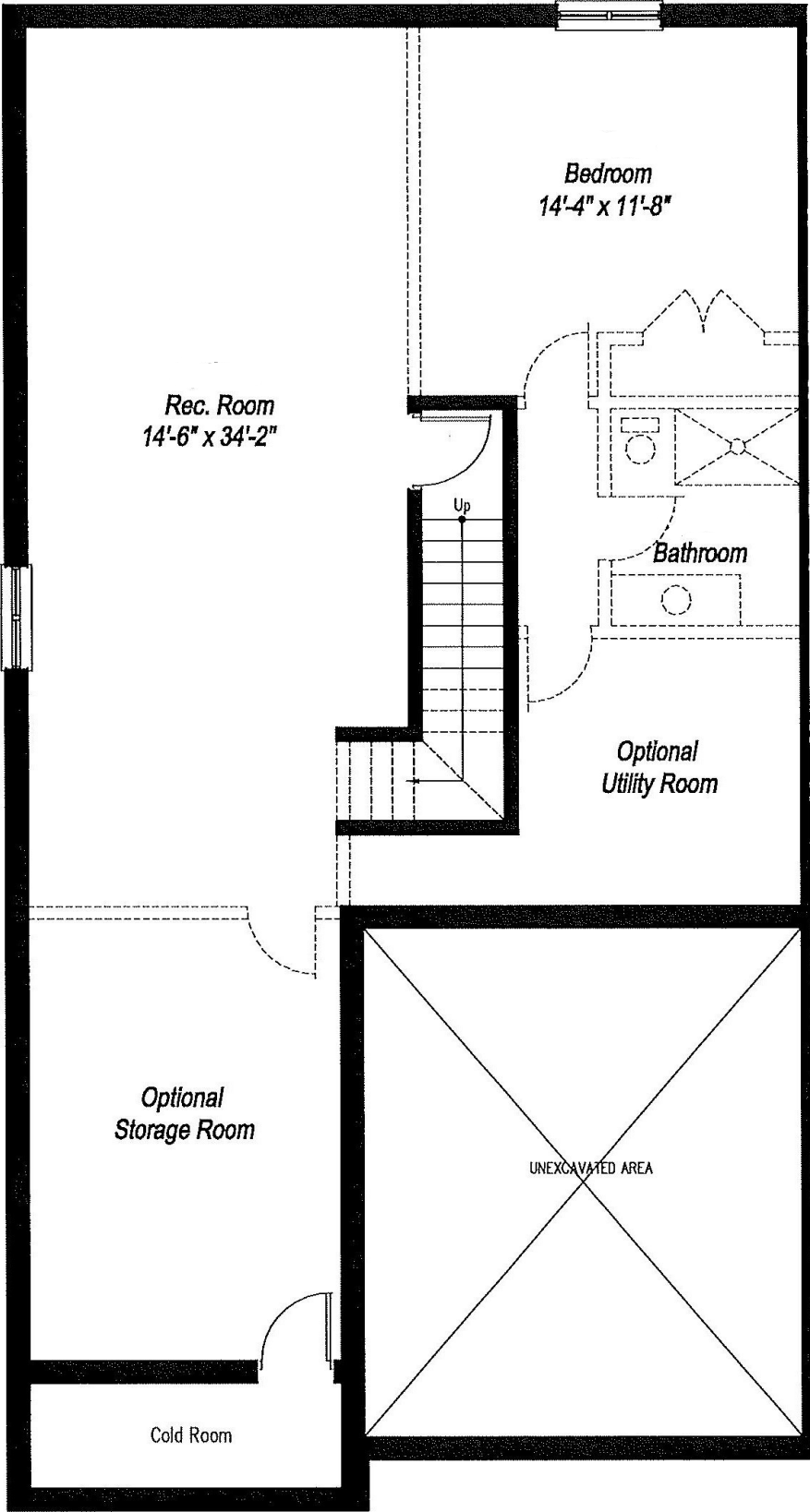


Basement Plan
9'-0" Basement Ceiling Height



Unit 33

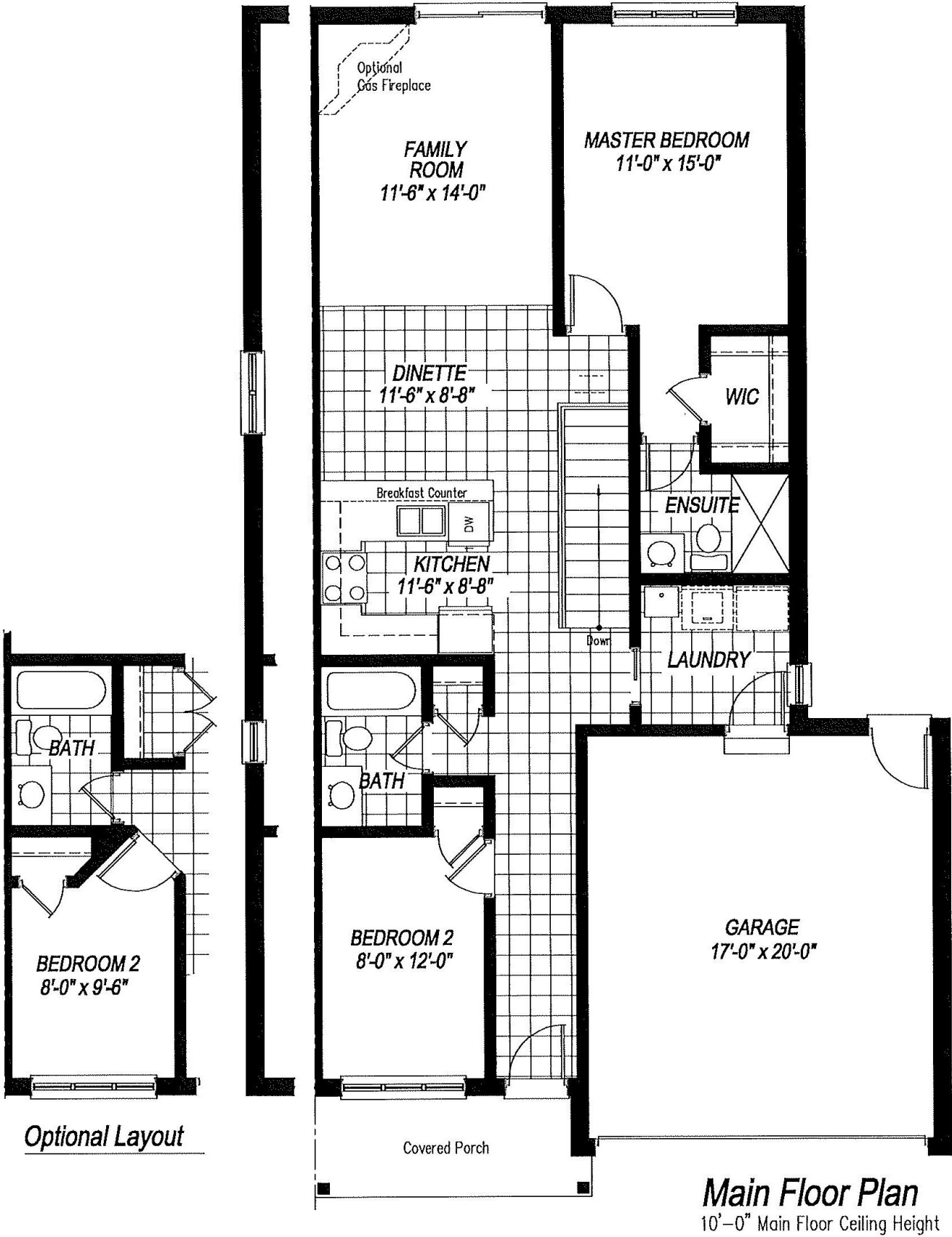
1365 sq.ft.



Basement Plan

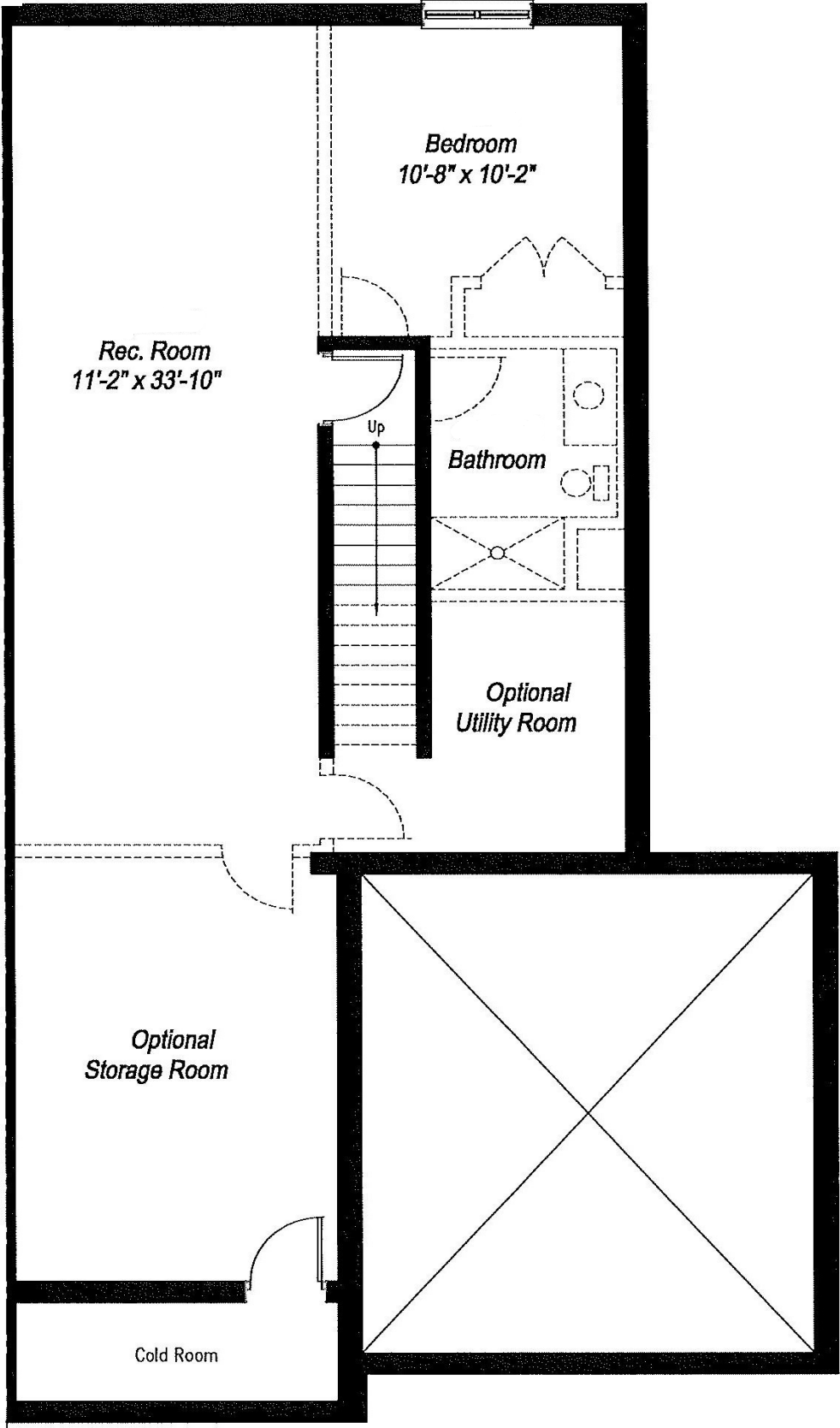
9'-0" Basement Ceiling Height

JADE | 1,100 sqft
2 bed / 2 bath



All house renderings and interior drawings are artist conception.
Material specifications and floor plans are subject to change without notice. All floor plans are approximate dimenstions, E.&O.E.
NOTE: Actual useable floor space may vary from the state floor area

Unit 38 1100 sq.ft.



Basement Plan
9'-0" Basement Ceiling Height

PRICE LIST



		Model Name	Lot Type	Main SqFt	Lower SqFt	Total SqFt	Garage Size	Base Price	Look Out	Walk Out	Grand Total
Unit #1	End	Opal	Standard	1,148	530	1,678	10 x 20	\$714,990	\$0	\$0	\$714,990
Unit #2	Int	Diamond	Standard	1,100	530	1,630	10 x 20	\$660,990	\$0	\$0	\$660,990
Unit #3	Int	Diamond	Standard	1,100	530	1,630	10 x 20	\$660,990	\$0	\$0	\$660,990
Unit #4	End	Topaz	Look-Out	1,365	607	1,972	17 x 20	\$800,990	\$30,000	\$0	\$830,990
Unit #5	End	Diamond	Look-Out	1,100	530	1,630	10 x 20	\$694,990	\$30,000	\$0	\$724,990
Unit #6	Int	Diamond	Look-Out	1,100	530	1,630	10 x 20	\$660,990	\$30,000	\$0	\$690,990
Unit #7	Int	Diamond	Look-Out	1,100	530	1,630	10 x 20	\$660,990	\$30,000	\$0	\$690,990
Unit #8	Int	Diamond	Look-Out	1,100	530	1,630	10 x 20	\$660,990	\$30,000	\$0	\$690,990
Unit #9	Int	Diamond	Look-Out	1,100	530	1,630	10 x 20	\$660,990	\$30,000	\$0	\$690,990
Unit #10	End	Diamond	Look-Out	1,100	530	1,630	10 x 20	\$694,990	\$30,000	\$0	\$724,990
Unit #11	End	Diamond	Walk-Out	1,100	530	1,630	10 x 20	\$694,990	\$0	\$50,000	\$744,990
Unit #12	Int	Diamond	Walk-Out	1,100	530	1,630	10 x 20	\$660,990	\$0	\$50,000	\$710,990
Unit #13	Int	Diamond	Walk-Out	1,100	530	1,630	10 x 20	\$660,990	\$0	\$50,000	\$710,990
Unit #14	Int	Diamond	Walk-Out	1,100	530	1,630	10 x 20	\$660,990	\$0	\$50,000	\$710,990
Unit #15	Int	Diamond	Walk-Out	1,100	530	1,630	10 x 20	\$660,990	\$0	\$50,000	\$710,990
Unit #16	End	Diamond	Walk-Out	1,100	530	1,630	10 x 20	\$694,990	\$0	\$50,000	\$744,990
Unit #17	End	Diamond	Walk-Out	1,100	530	1,630	10 x 20	\$694,990	\$0	\$50,000	\$744,990
Unit #18	Int	Diamond	Walk-Out	1,100	530	1,630	10 x 20	\$660,990	\$0	\$50,000	\$710,990
Unit #19	Int	Diamond	Walk-Out	1,100	530	1,630	10 x 20	\$660,990	\$0	\$50,000	\$710,990
Unit #20	Int	Diamond	Walk-Out	1,100	530	1,630	10 x 20	\$660,990	\$0	\$50,000	\$710,990
Unit #21	Int	Diamond	Walk-Out	1,100	530	1,630	10 x 20	\$660,990	\$0	\$50,000	\$710,990
Unit #22	End	Diamond	Walk-Out	1,100	530	1,630	10 x 20	\$694,990	\$0	\$50,000	\$744,990
Unit #23	End	Diamond	Walk-Out	1,100	530	1,630	10 x 20	\$694,990	\$0	\$50,000	\$744,990
Unit #24	Int	Diamond	Walk-Out	1,100	530	1,630	10 x 20	\$660,990	\$0	\$50,000	\$710,990
Unit #25	Int	Diamond	Walk-Out	1,100	530	1,630	10 x 20	\$660,990	\$0	\$50,000	\$710,990
Unit #26	Int	Diamond	Walk-Out	1,100	530	1,630	10 x 20	\$660,990	\$0	\$50,000	\$710,990
Unit #27	Int	Diamond	Walk-Out	1,100	530	1,630	10 x 20	\$660,990	\$0	\$50,000	\$710,990
Unit #28	End	Diamond	Walk-Out	1,100	530	1,630	10 x 20	\$694,990	\$0	\$50,000	\$744,990
Unit #29	End	Diamond	Walk-Out	1,100	530	1,630	10 x 20	\$694,990	\$0	\$50,000	\$744,990
Unit #30	Int	Diamond	Walk-Out	1,100	530	1,630	10 x 20	\$660,990	\$0	\$50,000	\$710,990
Unit #31	Int	Diamond	Walk-Out	1,100	530	1,630	10 x 20	\$660,990	\$0	\$50,000	\$710,990
Unit #32	Int	Diamond	Walk-Out	1,100	530	1,630	10 x 20	\$660,990	\$0	\$50,000	\$710,990
Unit #33	End	Garnet	Walk-Out	1,365	665	2,030	17 x 20	\$800,990	\$0	\$50,000	\$850,990
Unit #34	End	Topaz	Standard	1,365	607	1,972	17 x 20	\$800,990	\$0	\$0	\$800,990
Unit #35	Int	Diamond	Standard	1,100	530	1,630	10 x 20	\$660,990	\$0	\$0	\$660,990
Unit #36	Int	Diamond	Standard	1,100	530	1,630	10 x 20	\$660,990	\$0	\$0	\$660,990
Unit #37	End	Topaz	Standard	1,365	607	1,972	17 x 20	\$800,990	\$0	\$0	\$800,990
Unit #38	End	Jade	Standard	1,100	530	1,630	17 x 20	\$750,990	\$0	\$0	\$750,990
Unit #39	Int	Diamond	Standard	1,100	530	1,630	10 x 20	\$660,990	\$0	\$0	\$660,990
Unit #40	End	Topaz	Standard	1,365	607	1,972	17 x 20	\$800,990	\$0	\$0	\$800,990

Model Legend

- Diamond

Main Floor: 2 Bedroom, 2 Bath, Laundry; Lower Level: Finish Rec Reoom, Bedroom, 3PC Bath, Optional Storage
- Opal

Main Floor: 2 Bedroom, 2 Bath, Laundry; Lower Level: Finish Rec Reoom, Bedroom, 3PC Bath, Optional Storage
- Topaz

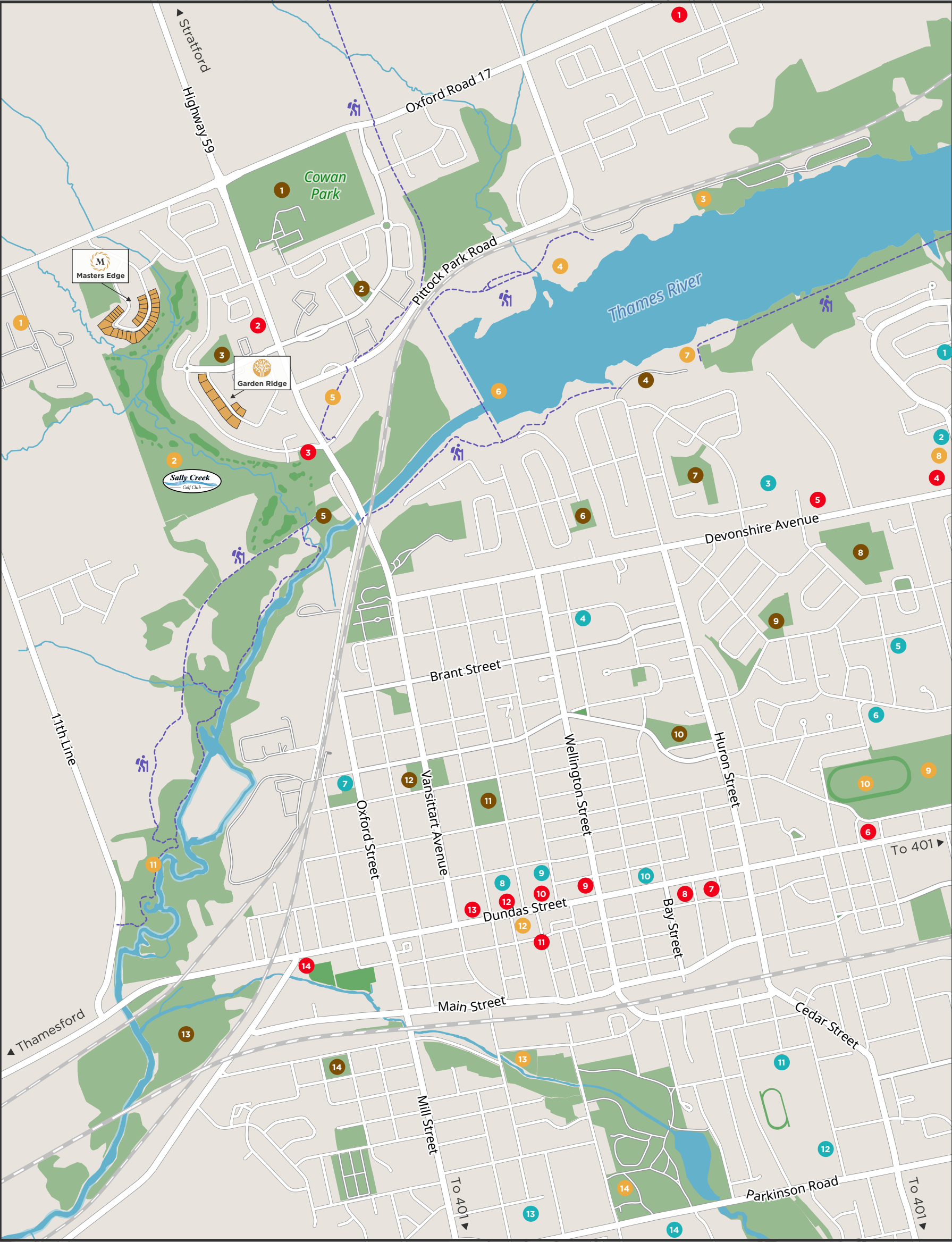
Main Floor: 2 Bedroom, 2 Bath, Laundry; Lower Level: Finish Rec Reoom, Bedroom, 3PC Bath, Optional Storage
- Garnet

Main Floor: 2 Bedroom, 2 Bath, Laundry, Den; Lower Level: Finish Rec Reoom, Bedroom, 3PC Bath, Optional Storage
- Jade

Main Floor: 2 Bedroom, 2 Bath, Laundry; Lower Level: Finish Rec Reoom, Bedroom, 3PC Bath, Optional Storage

Deposit Structure

- Deposit 1 : With Offer : \$5,000
- Deposit 2 : Upon Offer Acceptance : \$20,000
- Deposit 3 : 30 Days After Acceptance of Offer : \$25,000
- Deposit 4 : 60 Days After Acceptance of Offer : \$25,000
- Deposit 5 : 90 Days After Acceptance of Offer : \$25,000



RESTAURANTS

- 1 Indian Zaika Grill
- 2 Tim Hortons
- 3 Brickhouse Brewpub
- 4 Cutchie's Sports Tap
- 5 Tim Hortons
- 6 Starbucks
- 7 Flippin' Mike's
- 8 Sixtynine
- 9 IRONWORKS Kitchen
- 10 Charles Dickens Pub
- 11 Finkle Street Tap & Grill
- 12 Coffee Culture
- 13 Banana Leaf Thai
- 14 Chuckwagon

ATTRACTIONS

- 1 Canada's Farm Show
- 2 Sally Creek Golf Club
- 3 Oxford Sailing Club
- 4 Pittock Conservation Area
- 5 Woodstock Trail
- 6 Pittock Dam
- 7 Woodstock Dragonboat Club
- 8 Shopping Plaza
- 9 Civic Centre Arena
- 10 Gateway Casinos
- 11 Meadow Trail
- 12 Gallery Cinemas
- 13 Off-Lead Dog Park
- 14 Southside Aquatic Centre

PARKS

- 1 Cowen Park
- 2 Dr. JJ Williams Park
- 3 Woodstock Park
- 4 Roth Park
- 5 Standard Tube Park
- 6 Northland Park
- 7 William Grey Park
- 8 Brompton Park
- 9 Sloane Park
- 10 Sutherland Park
- 11 Victoria Park
- 12 Vansittart Park
- 13 Cedar Creek Park
- 14 Park Row Park

EDUCATION

- 1 Algonquin Public School
- 2 St Michael's Catholic Elementary
- 3 Blossom Park Adult Day School
- 4 Northdale Public School
- 5 Huron Park Secondary School
- 6 Winchester Street Public School
- 7 Holy Family French Immersion
- 8 Central Public School
- 9 Woodstock Collegiate Institute
- 10 Millpond Academy
- 11 College Avenue Secondary
- 12 Oliver Stephens Public School
- 13 Southside School
- 14 Fanshawe College Woodstock

WALKING TRAILS



RAILROAD TRACK



RIVER + STREAMS



PARKLAND + BUSH

