

GARDEN RIDGE

1,100 sqft 40 units



Garden Ridge

ADULT LIFESTYLE COMMUNITY



Front View



Elegant Roof Lines



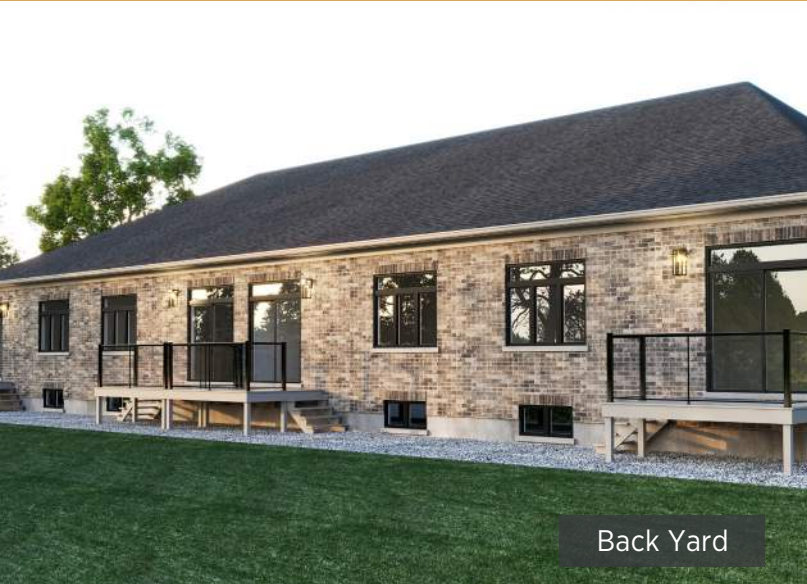
Upscale Stone & Brick Exterior



Luxurious 10' Main & 9' Basement Floors



Gourmet Kitchens & Custom Finishes



Back Yard



45° View

- 2 Bedrooms
- Private Garage
- Custom Kitchens
- 1.5 Bathrooms
- Granite Counters
- Walk-in Closets

226.242.5600

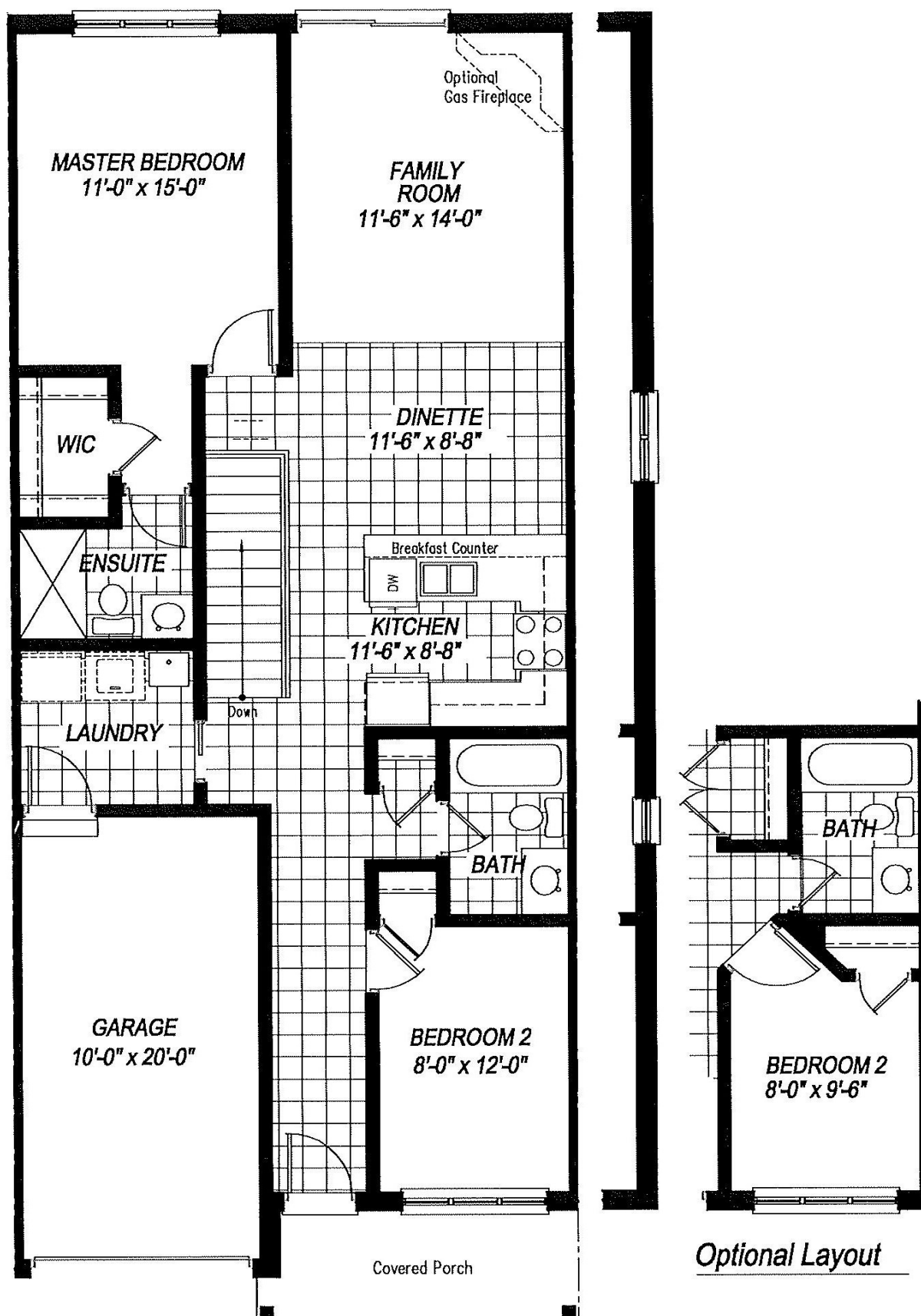
sclifestylehomes.com
sales@sclh.ca



Sally Creek
LIFESTYLE HOMES

All house renderings and interior drawings are artist conception. Material specifications and floor plans are subject to change without notice. All floor plans are approximate dimensions, E.&O.E.. NOTE: Actual usable floor space may vary from the stated floor area.

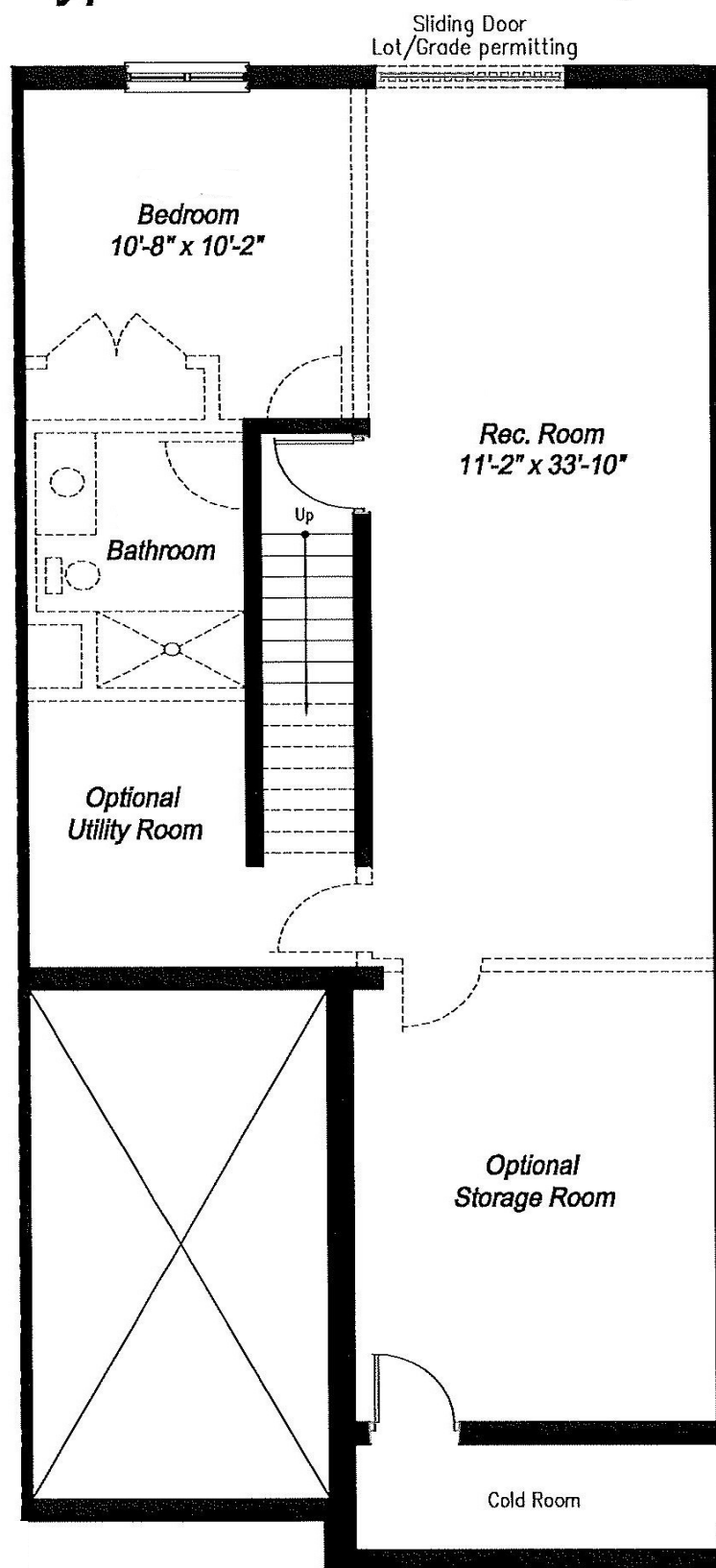
DIAMOND | 1,100 sqft
2 bed / 2 bath



Main Floor Plan
10'-0" Main Floor Ceiling Height

All house renderings and interior drawings are artist conception.
Material specifications and floor plans are subject to change without notice. All floor plans are approximate dimensions, E.&O.E.
NOTE: Actual useable floor space may vary from the state floor area

Typical Unit 1100 sq.ft.

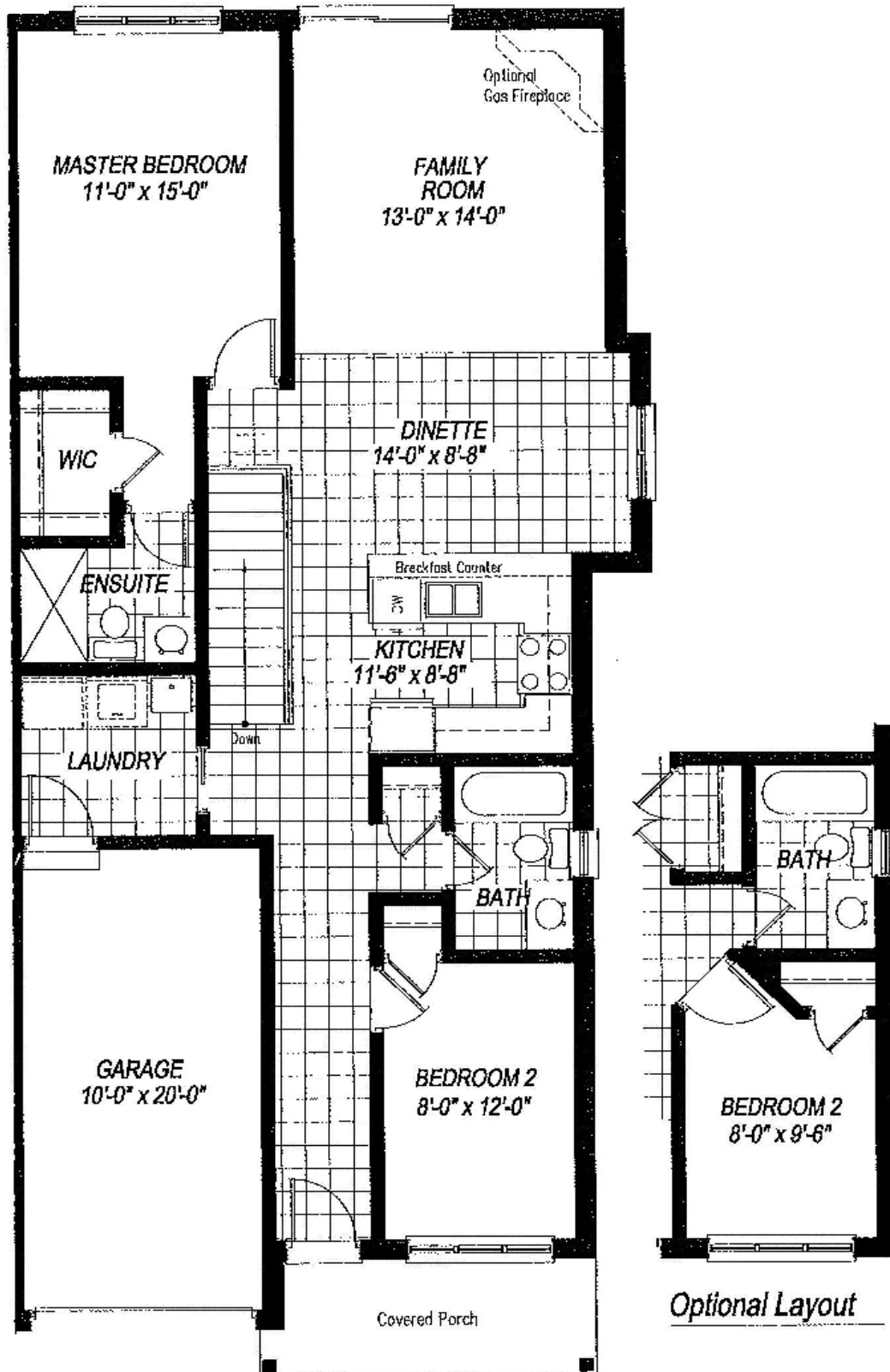


Basement Plan
9'-0" Basement Ceiling Height

OPAL | 1,148 sqft
2 bed / 2 bath


Sally Creek
LIFESTYLE HOMES


Garden Ridge
ADULT LIFESTYLE COMMUNITY



Main Floor Plan

10'-0" Main Floor Ceiling Height

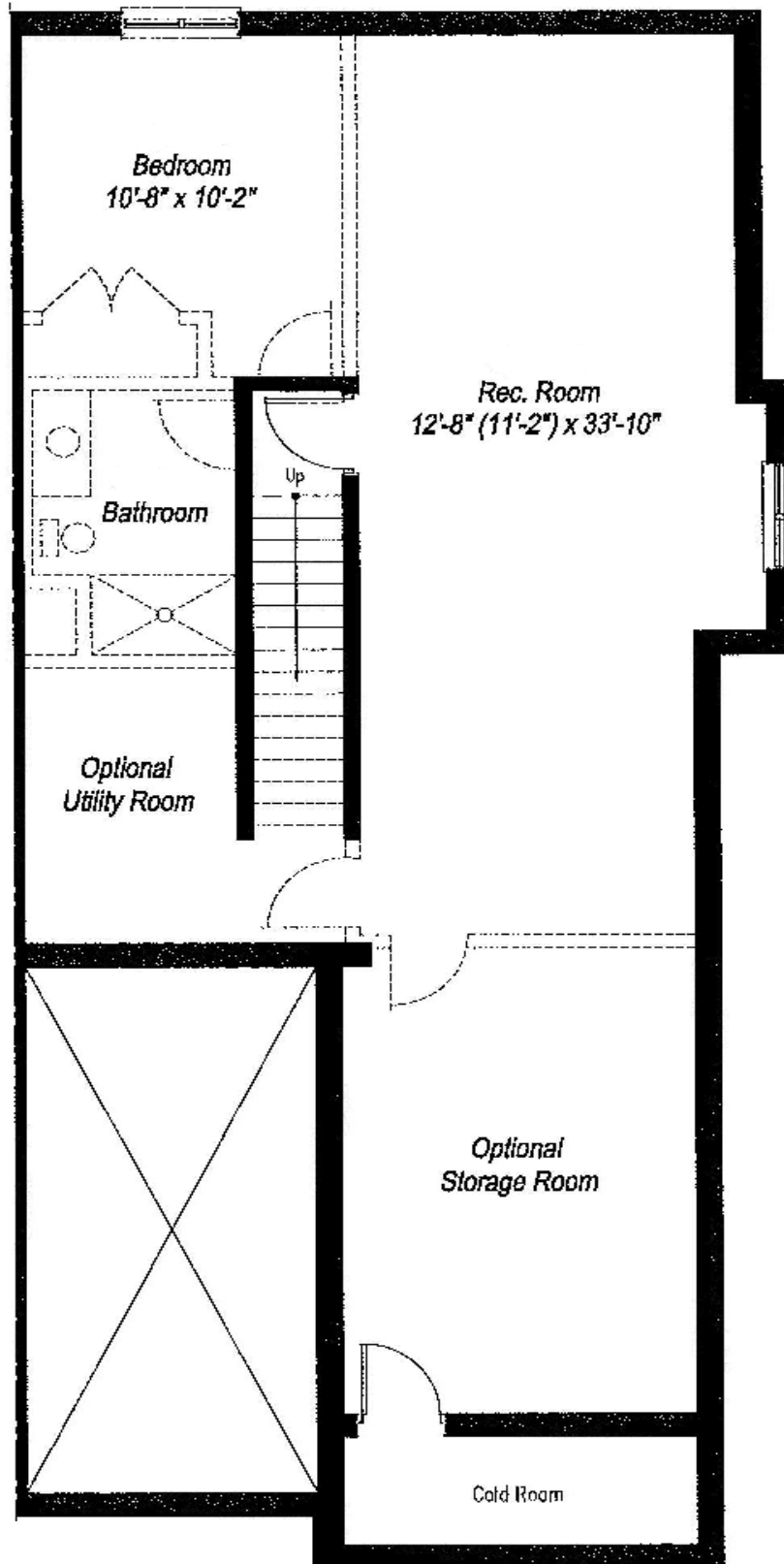
All house renderings and interior drawings are artist conception.
Material specifications and floor plans are subject to change without notice. All floor plans are approximate dimensions, E.&O.E.
NOTE: Actual useable floor space may vary from the state floor area

OPAL | 1,148 sqft
2 bed / 2 bath



Unit 1

1148 sq.ft.



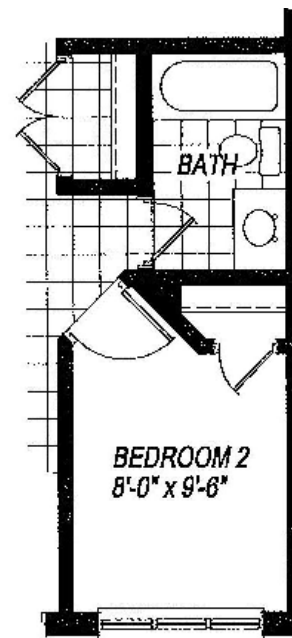
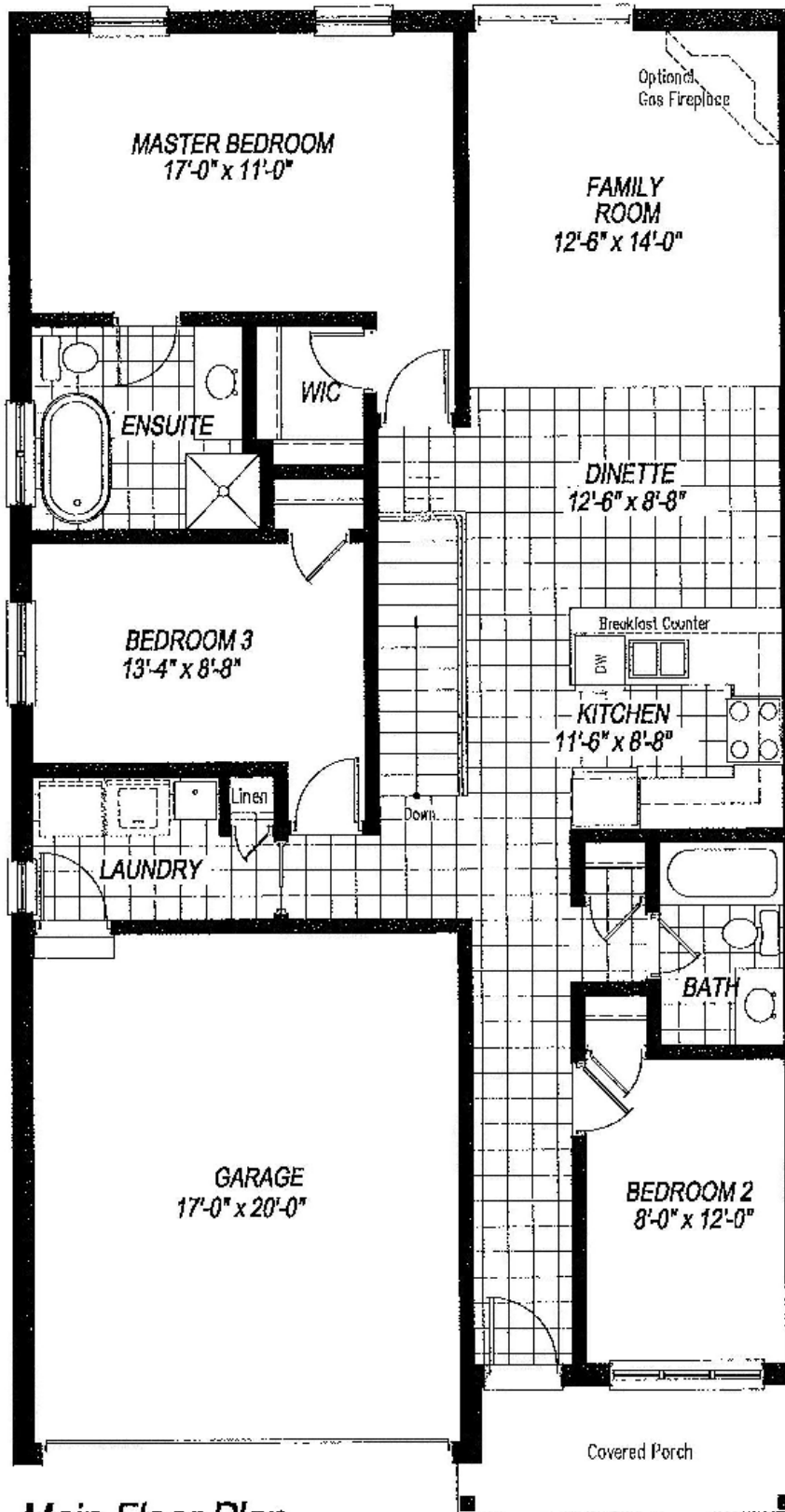
Basement Plan
9'-0" Basement Ceiling Height

All house renderings and interior drawings are artist conception.
Material specifications and floor plans are subject to change without notice. All floor plans are approximate dimensions, E.&O.E.
NOTE: Actual useable floor space may vary from the state floor area

TOPAZ | 1,365 sqft
3 bed / 2 bath


Sally Creek
LIFESTYLE HOMES


Garden Ridge
ADULT LIFESTYLE COMMUNITY



Optional Layout

Main Floor Plan

10'-0" Main Floor Ceiling Height

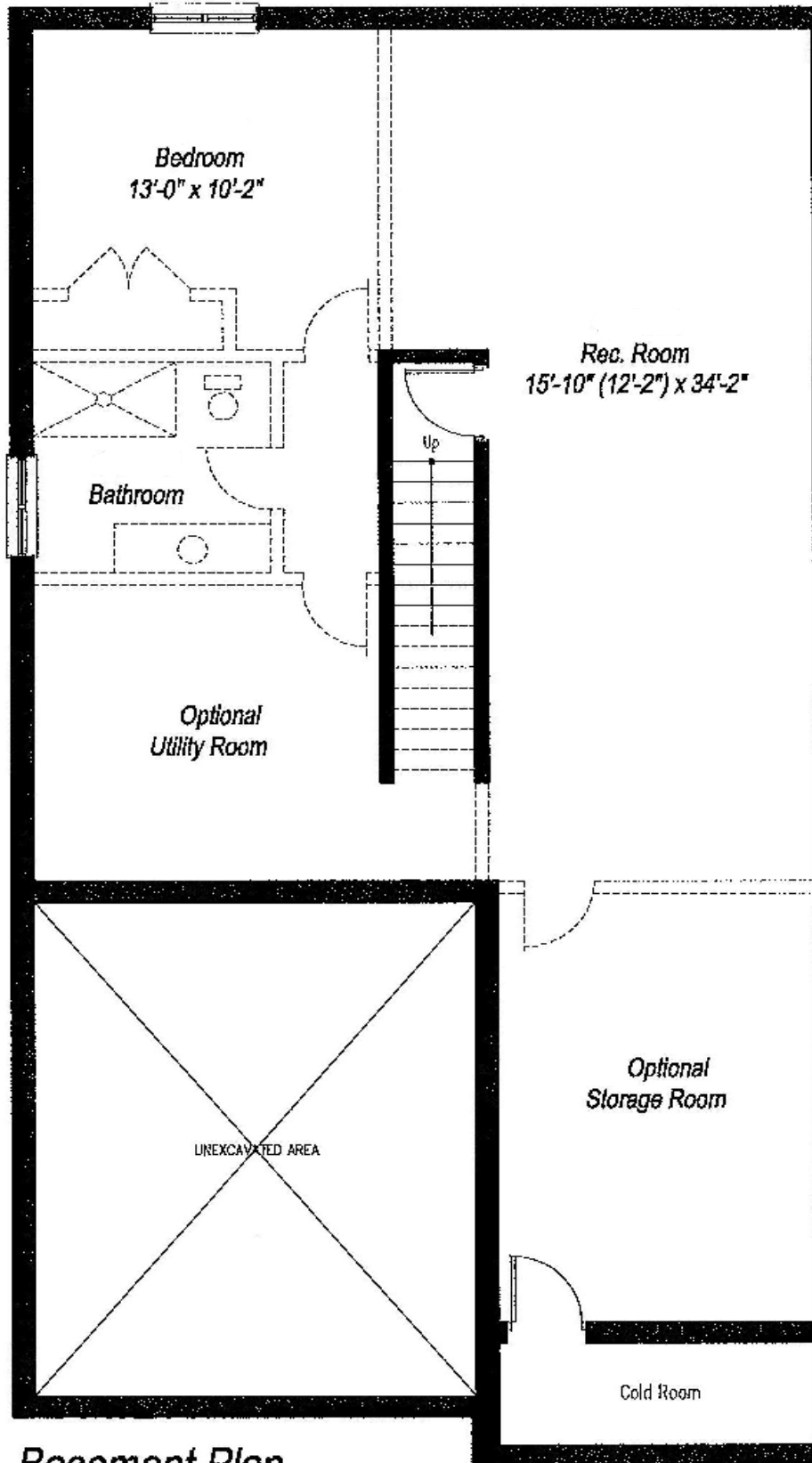
All house renderings and interior drawings are artist conception.

Material specifications and floor plans are subject to change without notice. All floor plans are approximate dimensions, E.&O.E.

NOTE: Actual useable floor space may vary from the state floor area

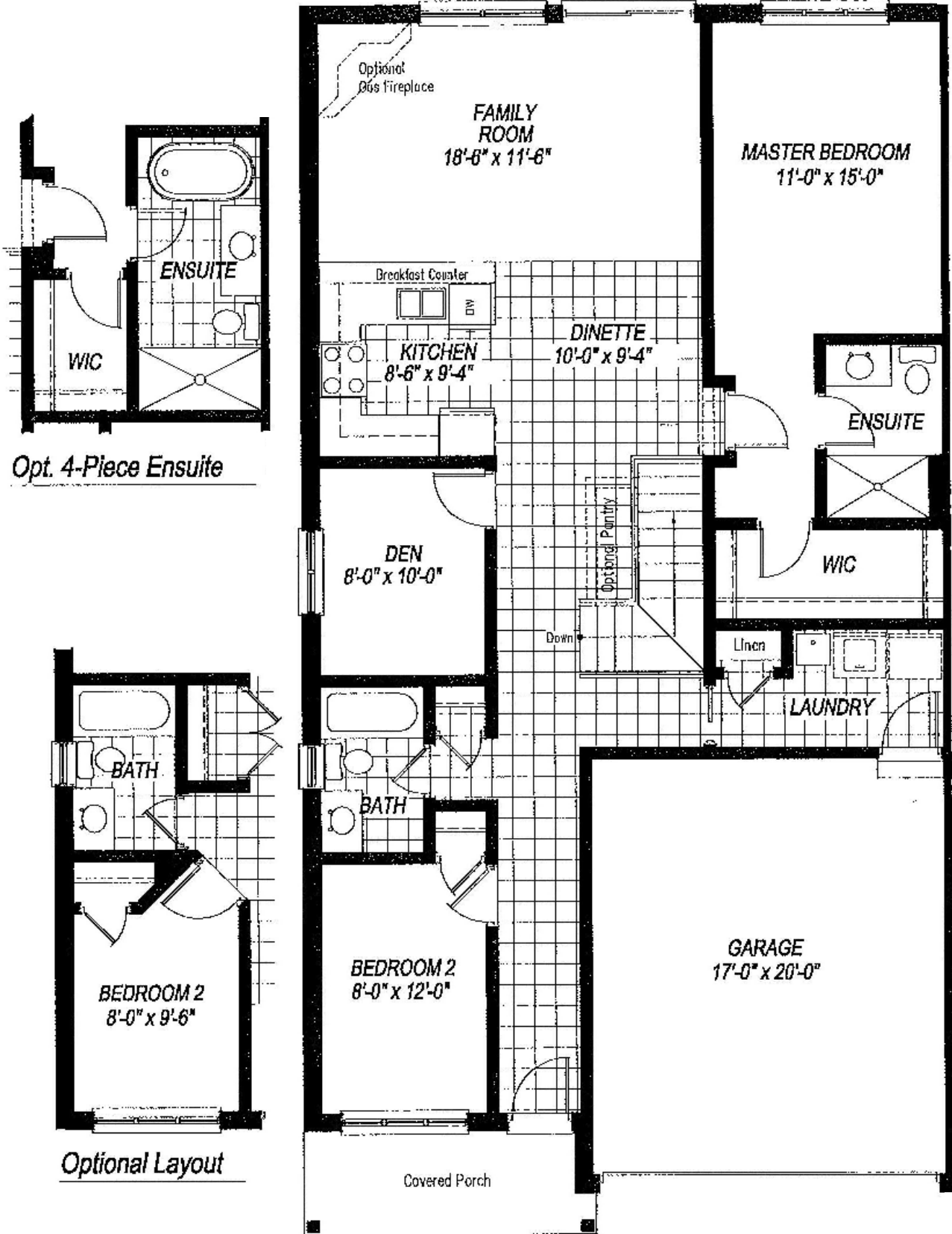
Unit 4, 34, 37 and 40

1365 sq.ft.



Basement Plan

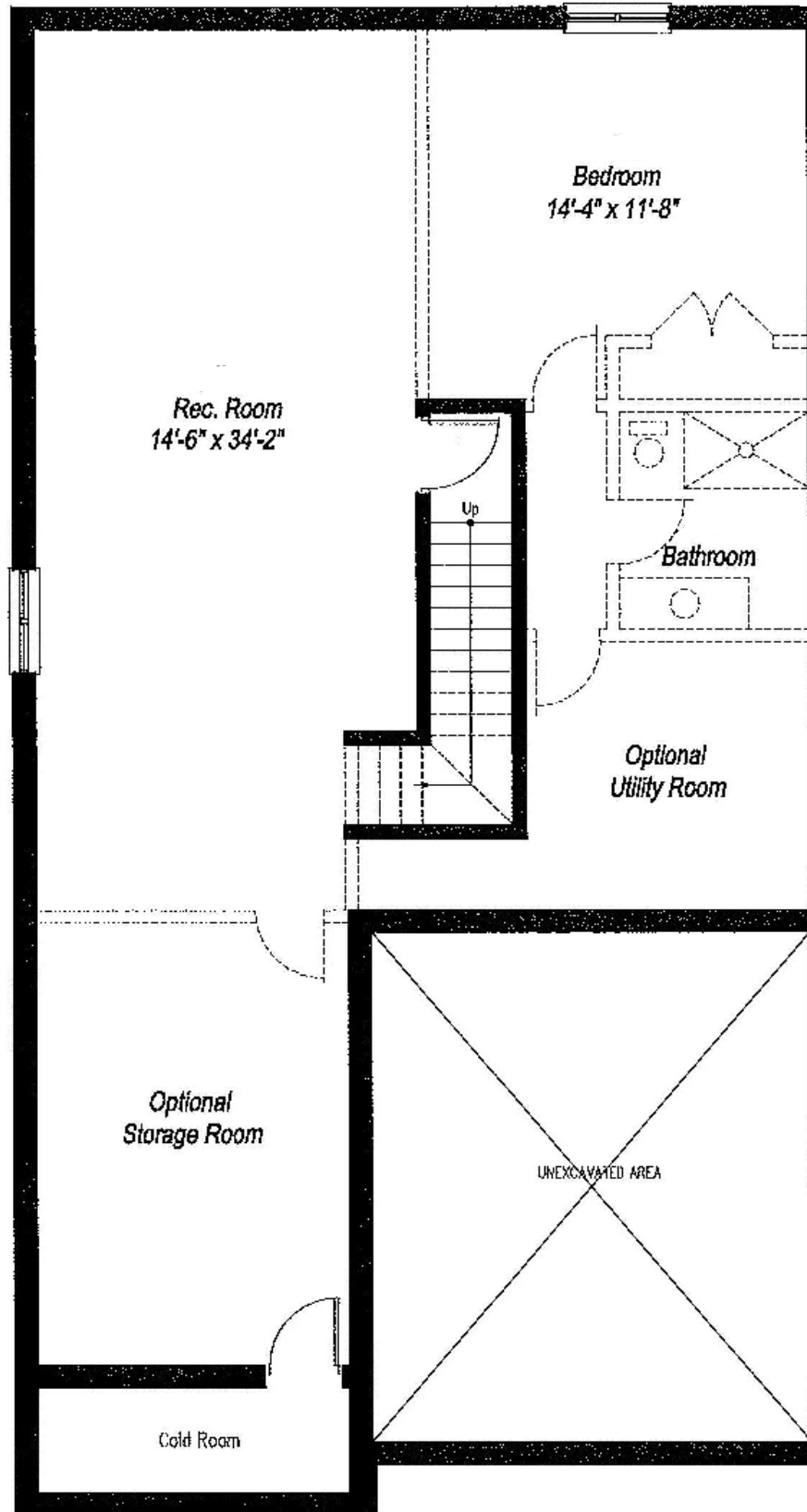
9'-0" Basement Ceiling Height



Main Floor Plan
10'-0" Main Floor Ceiling Height

Unit 33

1365 sq.ft.

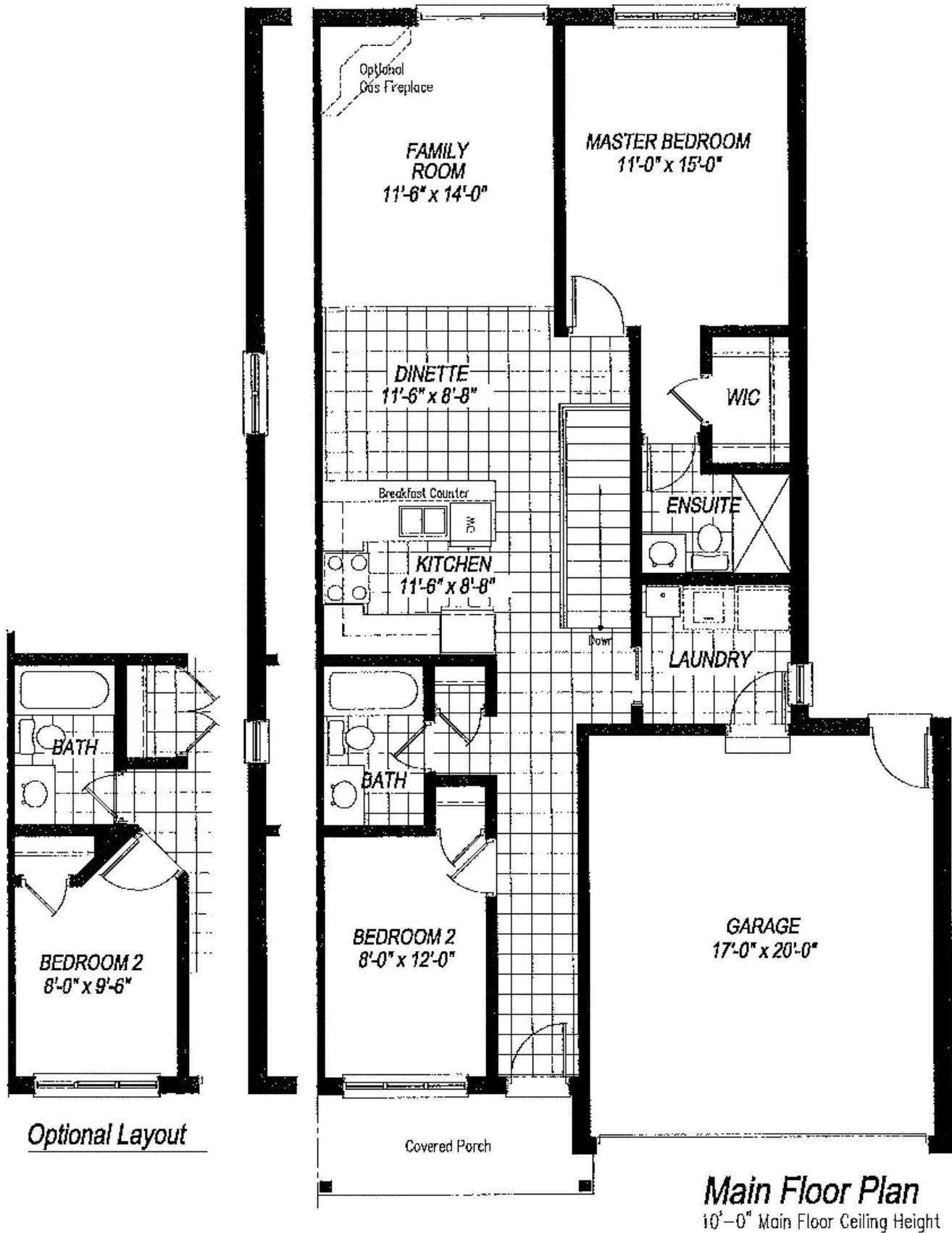


Basement Plan
9'-0" Basement Ceiling Height

JADE | 1,100 sqft
2 bed / 2 bath


Sally Creek
LIFESTYLE HOMES


Garden Ridge
ADULT LIFESTYLE COMMUNITY



All house renderings and interior drawings are artist conception.
Material specifications and floor plans are subject to change without notice. All floor plans are approximate dimensions, E.&O.E.
NOTE: Actual useable floor space may vary from the state floor area

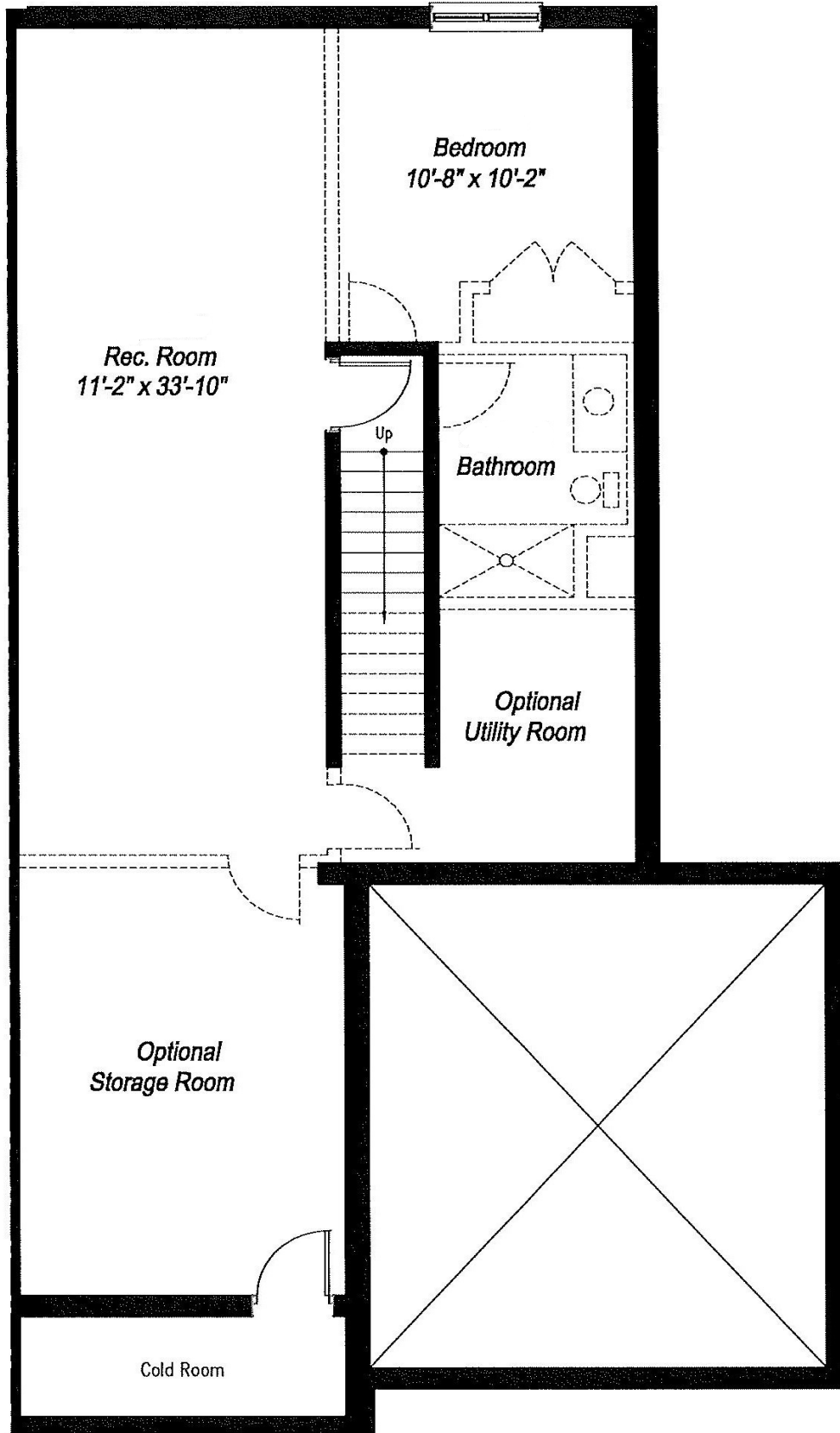
JADE | 1,100 sqft
2 bed / 2 bath

Sally Creek
LIFESTYLE HOMES

Garden Ridge
ADULT LIFESTYLE COMMUNITY

Unit 38

1100 sq.ft.



Basement Plan
9'-0" Basement Ceiling Height

All house renderings and interior drawings are artist conception.
Material specifications and floor plans are subject to change without notice. All floor plans are approximate dimensions, E.&O.E.
NOTE: Actual useable floor space may vary from the state floor area

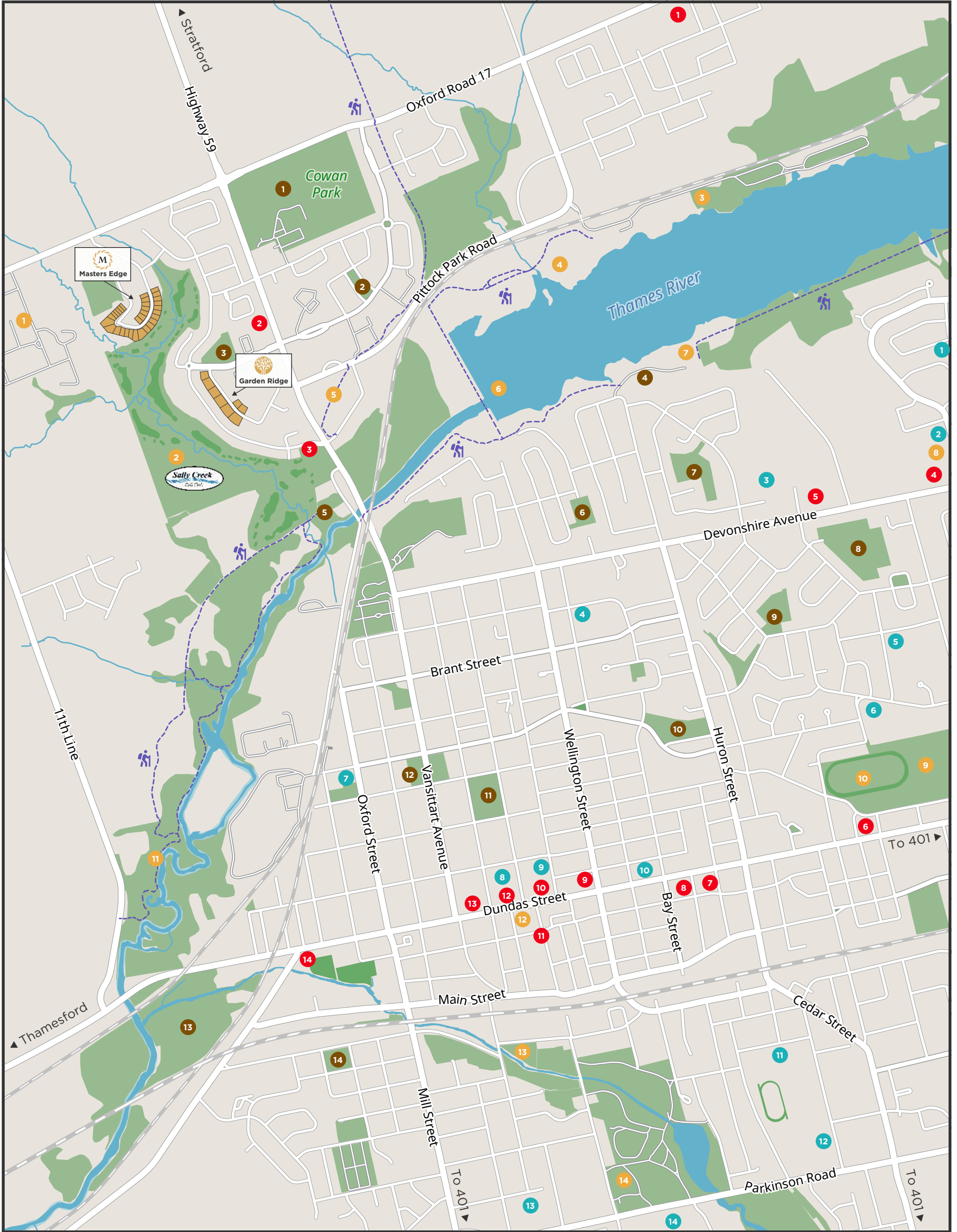
		Model Name	Lot Type	Main SqFt	Lower SqFt	Total SqFt	Garage Size	Look Out	Walk Out	Grand Total
Unit #1	End	Opal	Standard	1,148	530	1,678	10 x 20	\$30,000	\$0	\$784,990
Unit #2	Int	Diamond	Standard	1,100	530	1,630	10 x 20	\$30,000	\$0	\$769,990
Unit #3	Int	Diamond	Standard	1,100	530	1,630	10 x 20	\$30,000	\$0	\$769,990
Unit #4	End	Topaz	Look-Out	1,365	607	1,972	17 x 20	\$30,000	\$0	\$849,990
Unit #5	End	Diamond	Look-Out	1,100	530	1,630	10 x 20	\$30,000	\$0	\$779,990
Unit #6	Int	Diamond	Look-Out	1,100	530	1,630	10 x 20	\$30,000	\$0	\$769,990
Unit #7	Int	Diamond	Look-Out	1,100	530	1,630	10 x 20	\$30,000	\$0	\$769,990
Unit #8	Int	Diamond	Look-Out	1,100	530	1,630	10 x 20	\$30,000	\$0	\$769,990
Unit #9	Int	Diamond	Look-Out	1,100	530	1,630	10 x 20	\$30,000	\$0	\$769,990
Unit #10	End	Diamond	Look-Out	1,100	530	1,630	10 x 20	\$30,000	\$0	\$779,990
Unit #11	End	Diamond	Walk-Out	1,100	530	1,630	10 x 20	\$30,000	\$0	\$779,990
Unit #12	Int	Diamond	Walk-Out	1,100	530	1,630	10 x 20	\$30,000	\$0	\$769,990
Unit #13	Int	Diamond	Walk-Out	1,100	530	1,630	10 x 20	\$0	\$50,000	\$789,990
Unit #14	Int	Diamond	Walk-Out	1,100	530	1,630	10 x 20	\$0	\$50,000	\$789,990
Unit #15	Int	Diamond	Walk-Out	1,100	530	1,630	10 x 20	\$0	\$50,000	\$789,990
Unit #16	End	Diamond	Walk-Out	1,100	530	1,630	10 x 20	\$0	\$50,000	\$799,990
Unit #17	End	Diamond	Walk-Out	1,100	530	1,630	10 x 20	\$0	\$50,000	\$799,990
Unit #18	Int	Diamond	Walk-Out	1,100	530	1,630	10 x 20	\$0	\$50,000	\$789,990
Unit #19	Int	Diamond	Walk-Out	1,100	530	1,630	10 x 20	\$0	\$50,000	\$789,990
Unit #20	Int	Diamond	Walk-Out	1,100	530	1,630	10 x 20	\$0	\$50,000	\$789,990
Unit #21	Int	Diamond	Walk-Out	1,100	530	1,630	10 x 20	\$0	\$50,000	\$789,990
Unit #22	End	Diamond	Walk-Out	1,100	530	1,630	10 x 20	\$0	\$50,000	\$799,990
Unit #23	End	Diamond	Walk-Out	1,100	530	1,630	10 x 20	\$0	\$50,000	\$799,990
Unit #24	Int	Diamond	Walk-Out	1,100	530	1,630	10 x 20	\$0	\$50,000	\$789,990
Unit #25	Int	Diamond	Walk-Out	1,100	530	1,630	10 x 20	\$0	\$50,000	\$789,990
Unit #26	Int	Diamond	Walk-Out	1,100	530	1,630	10 x 20	\$0	\$50,000	\$789,990
Unit #27	Int	Diamond	Walk-Out	1,100	530	1,630	10 x 20	\$0	\$50,000	\$789,990
Unit #28	End	Diamond	Walk-Out	1,100	530	1,630	10 x 20	\$0	\$50,000	\$799,990
Unit #29	End	Diamond	Walk-Out	1,100	530	1,630	10 x 20	\$0	\$50,000	SOLD
Unit #30	Int	Diamond	Walk-Out	1,100	530	1,630	10 x 20	\$0	\$50,000	\$789,990
Unit #31	Int	Diamond	Walk-Out	1,100	530	1,630	10 x 20	\$0	\$50,000	\$789,990
Unit #32	Int	Diamond	Walk-Out	1,100	530	1,630	10 x 20	\$0	\$50,000	\$799,990
Unit #33	End	Garnet	Walk-Out	1,365	665	2,030	17 x 20	\$0	\$50,000	SOLD
Unit #34	End	Topaz	Standard	1,365	607	1,972	17 x 20	\$0	\$50,000	SOLD
Unit #35	Int	Diamond	Standard	1,100	530	1,630	10 x 20	\$0	\$50,000	SOLD
Unit #36	Int	Diamond	Standard	1,100	530	1,630	10 x 20	\$0	\$50,000	SOLD
Unit #37	End	Topaz	Standard	1,365	607	1,972	17 x 20	\$0	\$50,000	SOLD
Unit #38	End	Jade	Standard	1,100	530	1,630	17 x 20	\$0	\$50,000	SOLD
Unit #39	Int	Diamond	Standard	1,100	530	1,630	10 x 20	\$0	\$50,000	SOLD
Unit #40	End	Topaz	Standard	1,365	607	1,972	17 x 20	\$0	\$50,000	SOLD

Model Legend

Diamond	Main Floor: 2 Bedroom, 2 Bath, Laundry; Lower Level: Finish Rec Room, Bedroom, 3PC Bath, Optional Storage
Opal	Main Floor: 2 Bedroom, 2 Bath, Laundry; Lower Level: Finish Rec Room, Bedroom, 3PC Bath, Optional Storage
Topaz	Main Floor: 2 Bedroom, 2 Bath, Laundry; Lower Level: Finish Rec Room, Bedroom, 3PC Bath, Optional Storage
Garnet	Main Floor: 2 Bedroom, 2 Bath, Laundry, Den; Lower Level: Finish Rec Room, Bedroom, 3PC Bath, Optional Storage
Jade	Main Floor: 2 Bedroom, 2 Bath, Laundry; Lower Level: Finish Rec Room, Bedroom, 3PC Bath, Optional Storage

Deposit Structure

- Deposit 1 : With Offer : **\$5,000**
- Deposit 2 : Upon Offer Acceptance : **\$20,000**
- Deposit 3 : 30 Days After Acceptance of Offer : **\$25,000**
- Deposit 4 : 60 Days After Acceptance of Offer : **\$25,000**
- Deposit 5 : 90 Days After Acceptance of Offer : **\$25,000**



RESTAURANTS

- 1 Indian Zaika Grill
- 2 Tim Hortons
- 3 Brickhouse Brewpub
- 4 Cutchie's Sports Tap
- 5 Tim Hortons
- 6 Starbucks
- 7 Flippin' Mike's
- 8 Sixtythree
- 9 IRONWORKS Kitchen
- 10 Charles Dickens Pub
- 11 Finkle Street Tap & Grill
- 12 Coffee Culture
- 13 Banana Leaf Thai
- 14 Chuckwagon

ATTRACTIONS

- 1 Canada's Farm Show
- 2 Sally Creek Golf Club
- 3 Oxford Sailing Club
- 4 Pittock Conservation Area
- 5 Woodstock Trail
- 6 Pittock Dam
- 7 Woodstock Dragonboat Club
- 8 Shopping Plaza
- 9 Civic Centre Arena
- 10 Gateway Casinos
- 11 Meadow Trail
- 12 Gallery Cinemas
- 13 Off-Lead Dog Park
- 14 Southside Aquatic Centre

PARKS

- 1 Cowen Park
- 2 Dr. JJ Williams Park
- 3 Woodstock Park
- 4 Roth Park
- 5 Standard Tube Park
- 6 Northland Park
- 7 William Grey Park
- 8 Brompton Park
- 9 Sloane Park
- 10 Sutherland Park
- 11 Victoria Park
- 12 Vansittart Park
- 13 Cedar Creek Park
- 14 Park Row Park

EDUCATION

- 1 Algonquin Public School
- 2 St Michael's Catholic Elementary
- 3 Blossom Park Adult Day School
- 4 Northdale Public School
- 5 Huron Park Secondary School
- 6 Winchester Street Public School
- 7 Holy Family French Immersion
- 8 Central Public School
- 9 Woodstock Collegiate Institute
- 10 Millpond Academy
- 11 College Avenue Secondary
- 12 Oliver Stephens Public School
- 13 Southside School
- 14 Fanshawe College Woodstock

WALKING TRAILS



RAILROAD TRACK



RIVER + STREAMS



PARKLAND + BUSH

