

HEPWORTH

1,525 sqft 50/60' lot



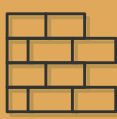
Plattsville Estates
EXECUTIVE HOMES



Front View



Elegant
Roof Lines



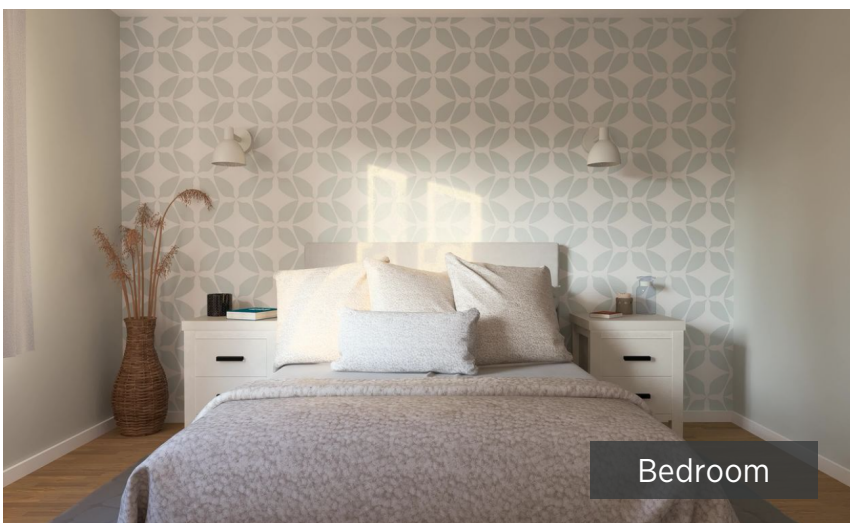
Upscale Stone &
Brick Exterior



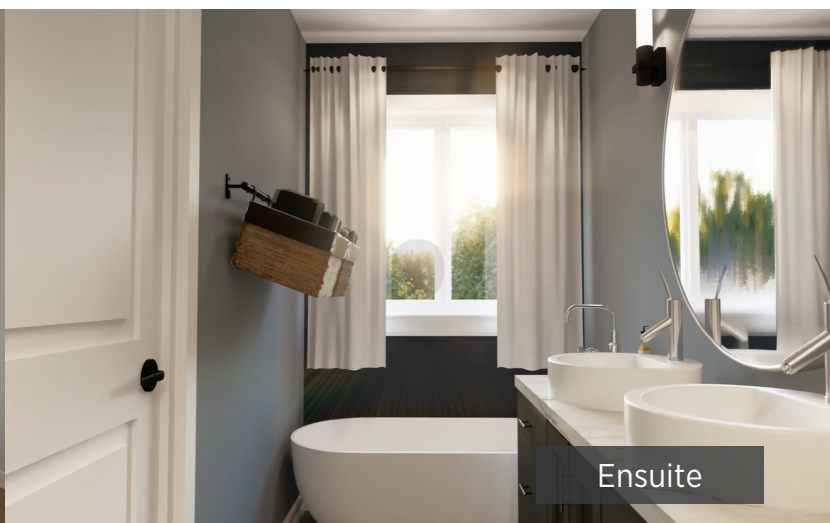
Luxurious 9' Main &
8' Second Floors



Gourmet Kitchens w/
Extended Height Cabinets



Bedroom



Ensuite

- 3 Bedrooms
- 2 Bathrooms

- 2 Car Garage
- Granite & Quartz Counters

- Oak Stairs
- Walk-Out Lots

226.242.5600

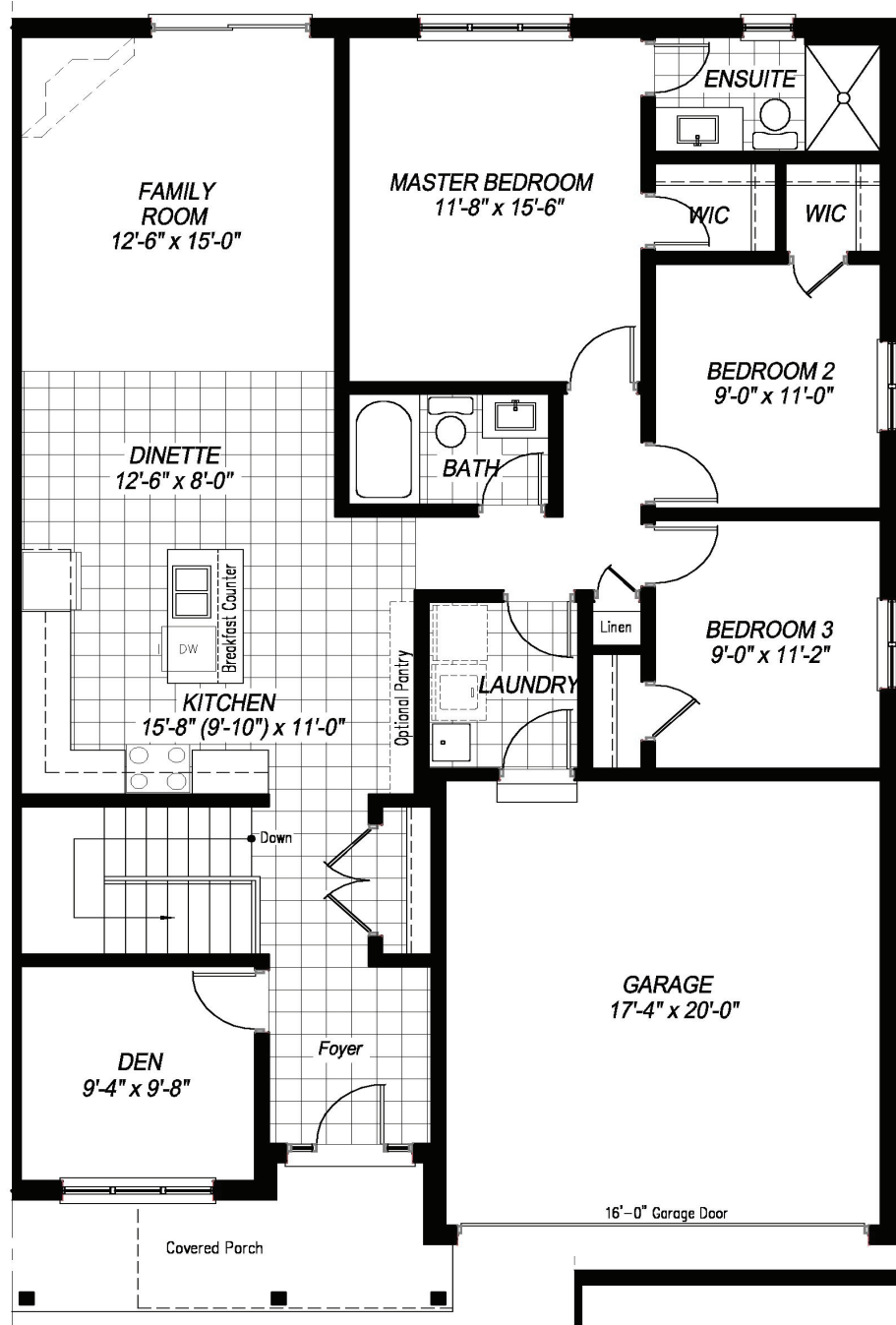
sclifestylehomes.com
sales@sclh.ca

All house renderings and interior drawings are artist conception. Material specifications and floor plans are subject to change without notice. All floor plans are approximate dimensions, E.&O.E.. NOTE: Actual usable floor space may vary from the stated floor area.

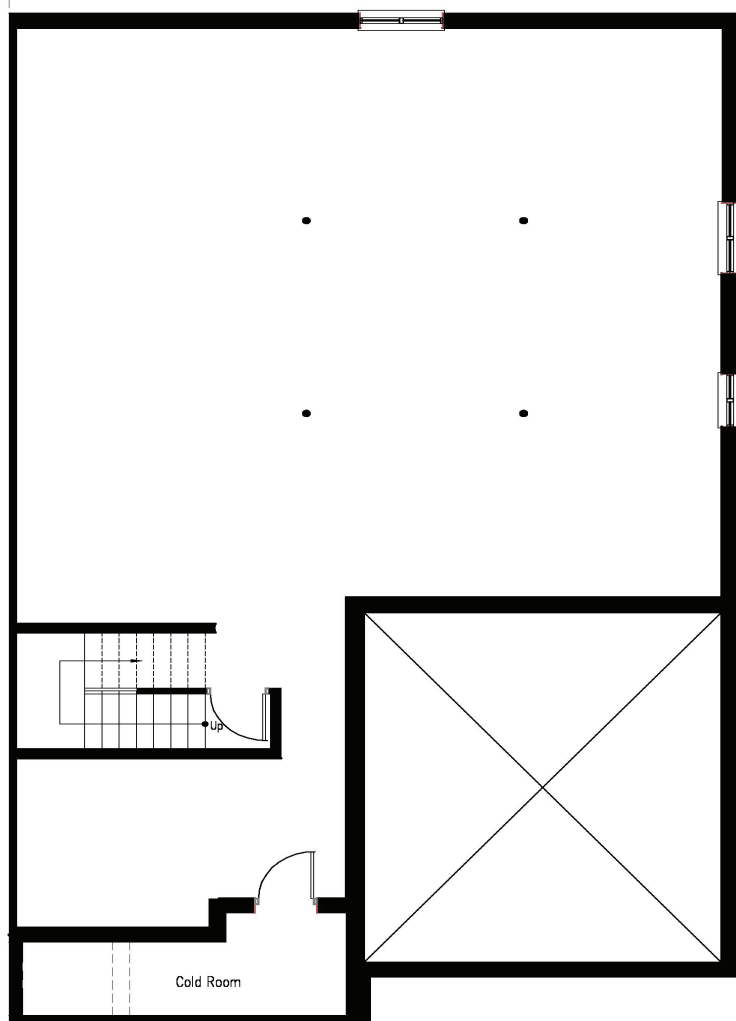
Sally Creek
LIFESTYLE HOMES

HEPWORTH

1,525 sqft
3 bed / 2 bath



MAIN FLOOR



BASEMENT



All house renderings and interior drawings are artist conception. Material specifications and floor plans are subject to change without notice. All floor plans are approximate dimensions, E.&O.E. NOTE: Actual usable floor space may vary from the stated floor area.