

SOUTHCOTE

1,755 sqft 50/60' lot



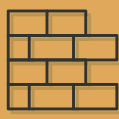
Plattville Estates
EXECUTIVE HOMES



Front View



Elegant
Roof Lines



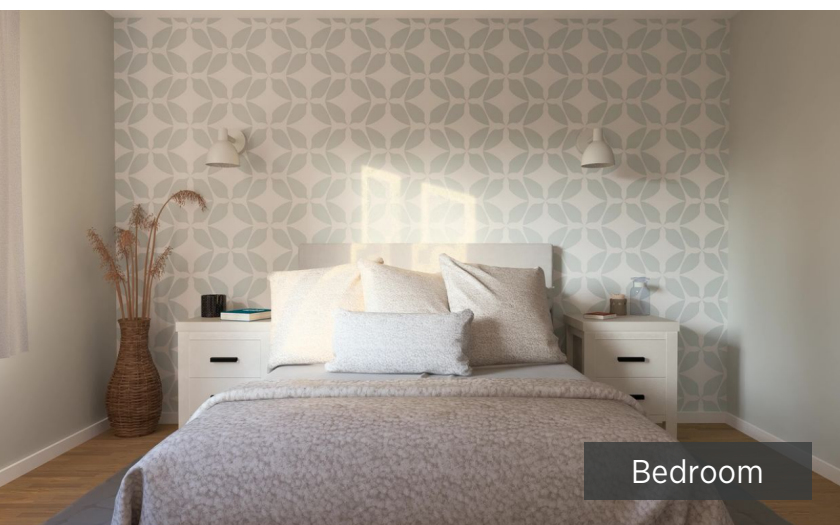
Upscale Stone &
Brick Exterior



Luxurious 9' Main &
8' Second Floors



Gourmet Kitchens w/
Extended Height Cabinets



Bedroom



Ensuite

- 3 Bedrooms
- 2 Car Garage
- Oak Stairs
- 2.5 Bathrooms
- Granite & Quartz Counters
- Walk-Out Lots

226.242.5600

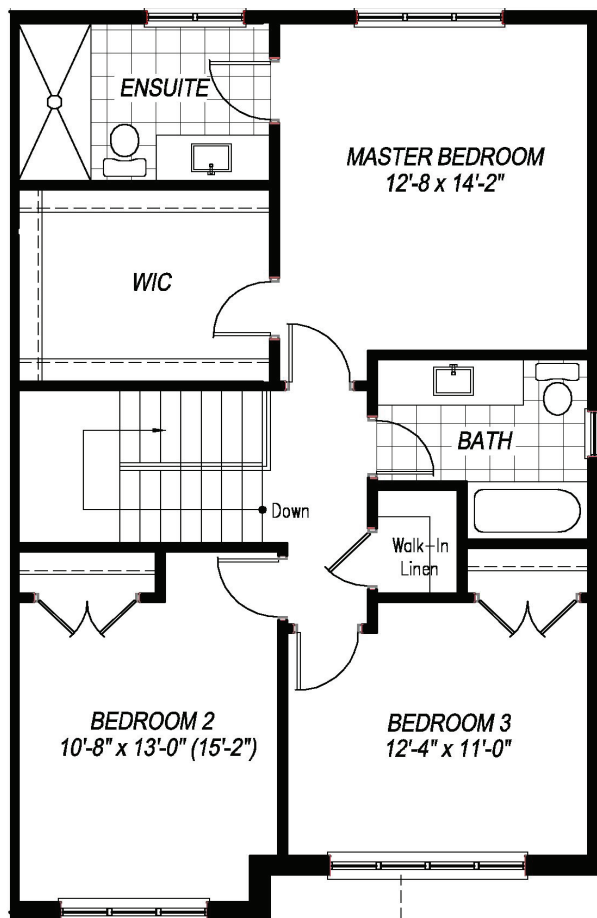
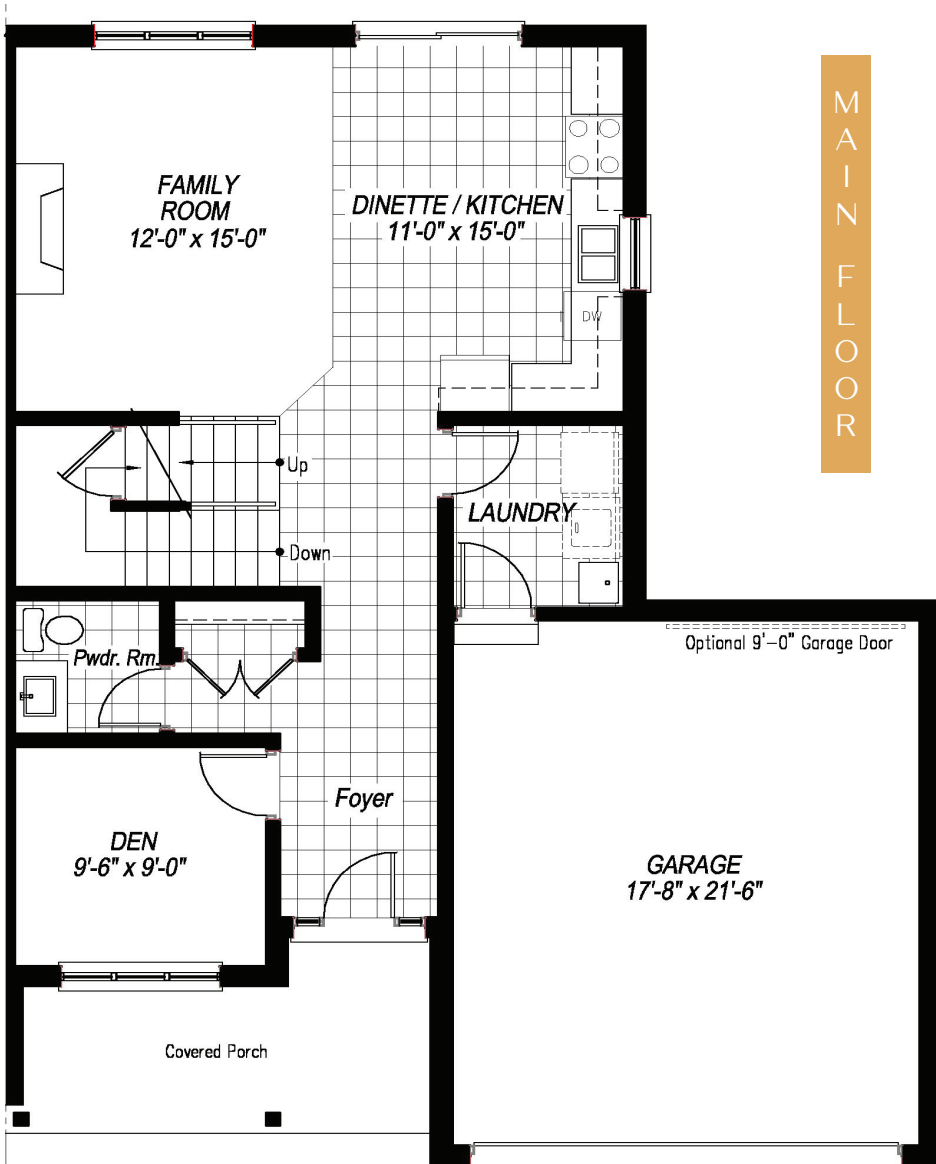
sclifestylehomes.com
sales@sclh.ca

All house renderings and interior drawings are artist conception. Material specifications and floor plans are subject to change without notice. All floor plans are approximate dimensions, E.&O.E.. NOTE: Actual usable floor space may vary from the stated floor area.

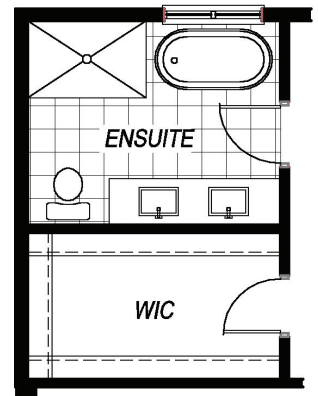
Sally Creek
LIFESTYLE HOMES

SOUTHCOTE

1,755 sqft
3 bed / 2.5 bath



Optional 4-Piece Ensuite



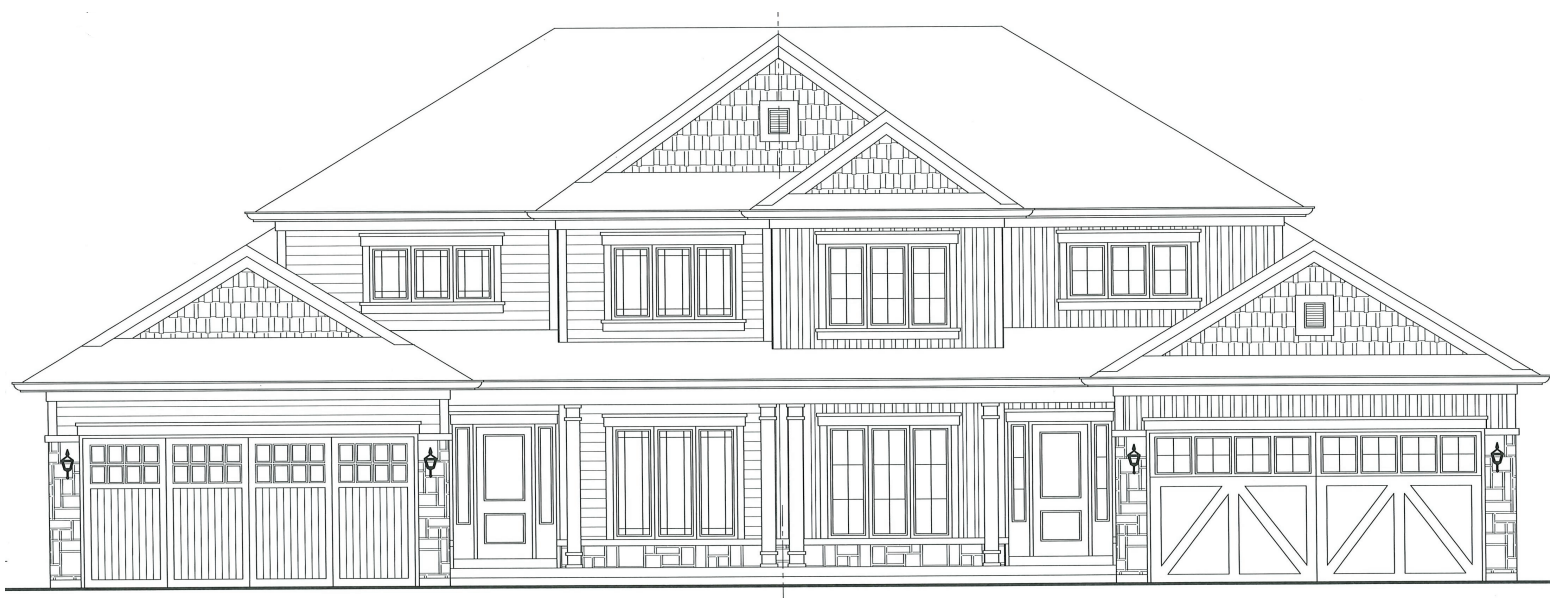
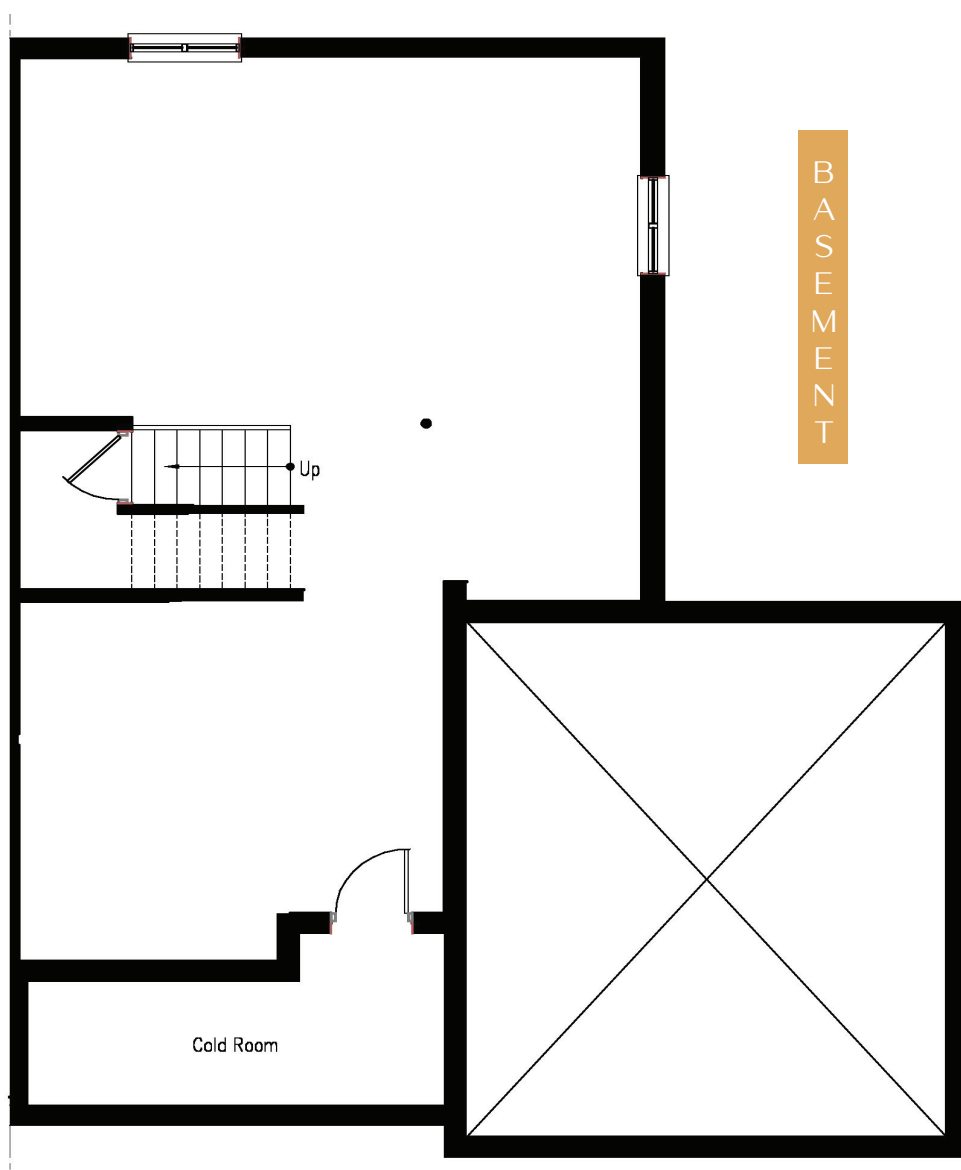
All house renderings and interior drawings are artist conception. Material specifications and floor plans are subject to change without notice. All floor plans are approximate dimensions, E.&O.E. NOTE: Actual usable floor space may vary from the stated floor area.

SOUTHCOTE

1,755 sqft
3 bed / 2.5 bath



Plattsville Estates
EXECUTIVE HOMES



All house renderings and interior drawings are artist conception. Material specifications and floor plans are subject to change without notice. All floor plans are approximate dimensions, E.&O.E.. NOTE: Actual usable floor space may vary from the stated floor area.